

Television Centre

The Architects' Series Plans & Specifications

The Architects' Series

The Architects' Series

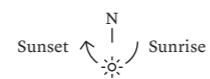
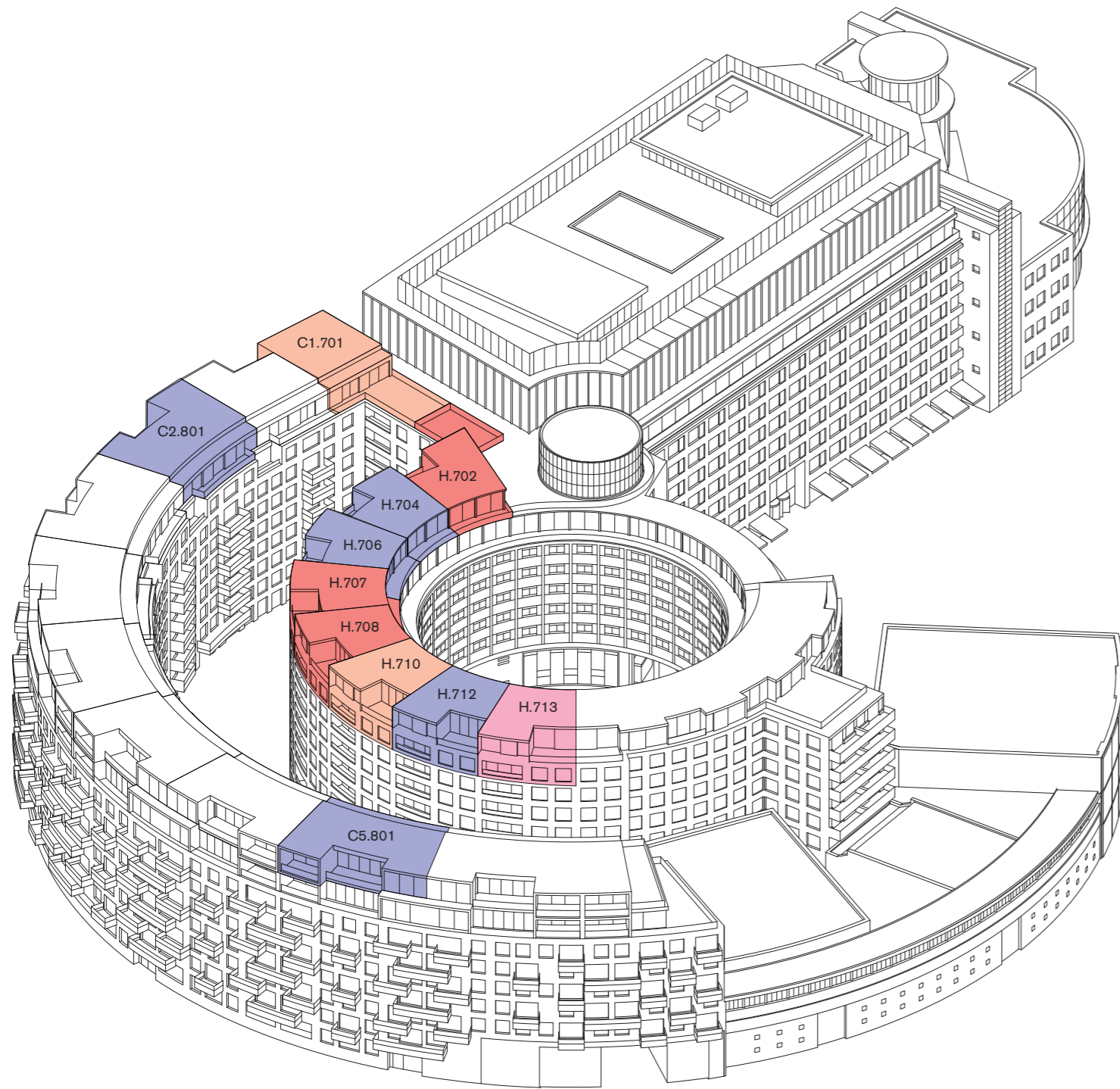
For the Architects' Series, the design team posed a simple question: what do buyers of premium homes want? The answer we believe is choice, character and uniqueness.

With this in mind, Stirling Prize-winning architects Allford Hall Monaghan Morris handpicked a group of contemporary architects who exemplify this ethos. The result is the creation of a series of homes distinct in character, designed to appeal to the diverse preferences and needs of demanding buyers. Quite simply a series of homes where no two are alike.

Contents

Apartment guide	6
<u>Allford Hall Monaghan Morris</u>	
Apartment plans	8
Specification	18
<u>Coffey Architects</u>	
Apartment plans	20
Specification	24
<u>Haptic</u>	
Apartment plans	26
Specification	34
<u>Piercy&Company</u>	
Apartment plans	36
Specification	42
Contact	44

Floors 7–8



Apartment guide

	Apartment	Style	Bedrooms	Sq ft	Sq m
● Allford Hall Monaghan Morris	H.704	Duplex	3	2,278	211.6
	H.706	Duplex	3	2,283	212.1
	H.712	Duplex	3	2,257	209.7
	C2.801	Lateral	3	2,188	203.3
	C5.801	Lateral	3	2,237	202.8
● Coffey Architects	H.713	Duplex	2	1,973	183.3
● Haptic	H.702	Duplex	3	2,355	218.7
	H.707	Duplex	3	2,251	209.1
	H.708	Duplex	3	2,279	211.7
● Piercy&Company	C1.701	Duplex	2	2,447	227.3
	H.710	Duplex	3	2,202	204.6



Allford Hall Monaghan Morris, the Stirling Prize-winning practice and lead architects of Television Centre, has conceived a selection of grand three-bedroom apartments which place the kitchen at the heart of the layout. This space extends to the outdoors via generous openings onto a spacious terrace with far-reaching views of London, making it a perfect place to entertain. In colder climes, the same views can be enjoyed from the handsome floating bench that bisects the areas.

The confident material palette chosen throughout the apartments is made up of cool timbers and fresh ceramic, with contemporary brushed brass accents in the bathrooms.

Allford Hall Monaghan Morris

Allford Hall Monaghan Morris
Apartment H.704

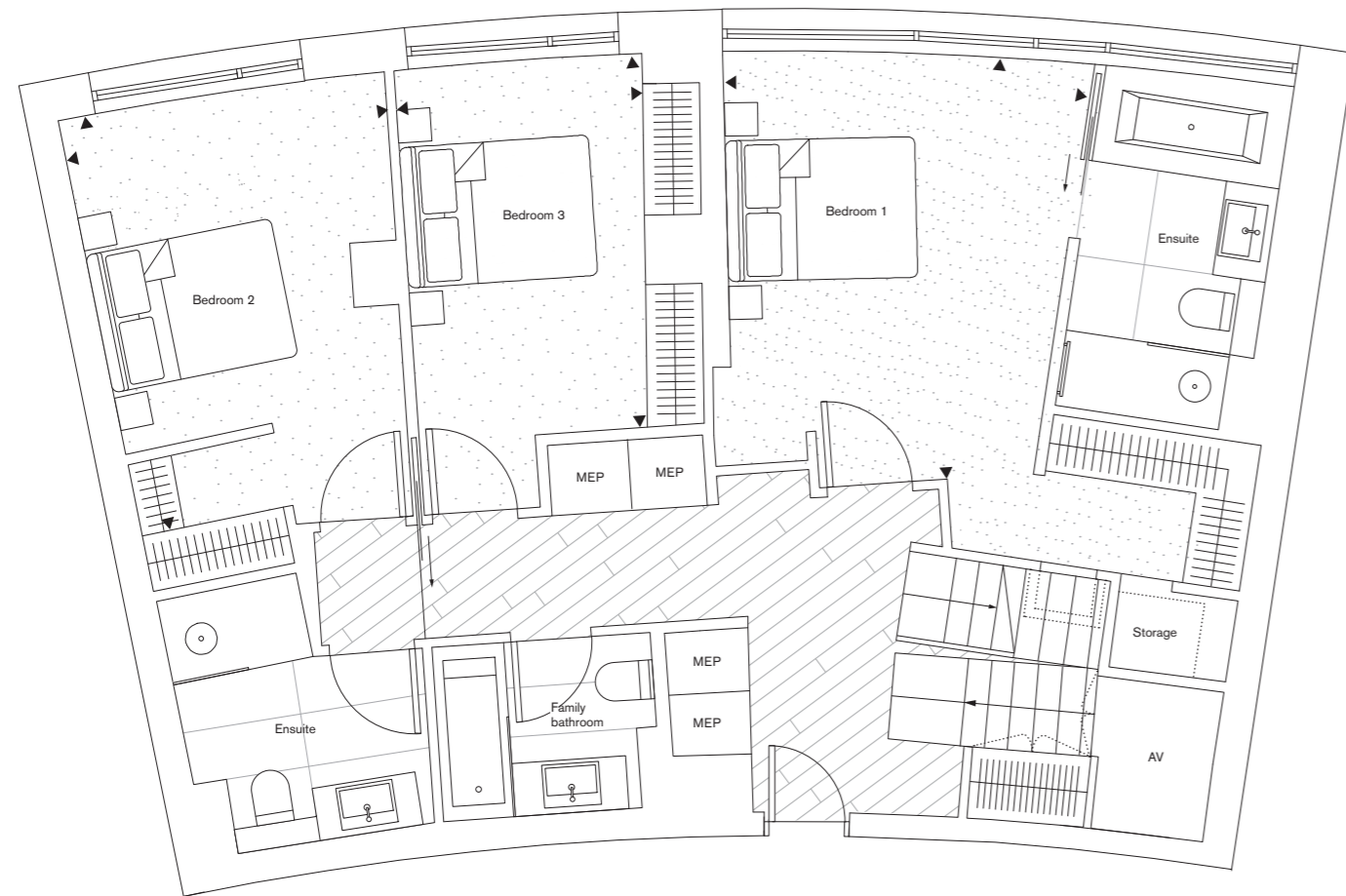
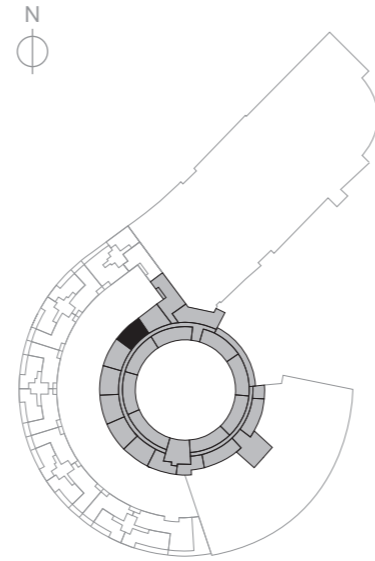
3 bedroom duplex

Net saleable area	sq m	sq ft
Total	211.60	2278
Ceiling height	m	
Max/Min	2.90/2.40	

Seventh floor

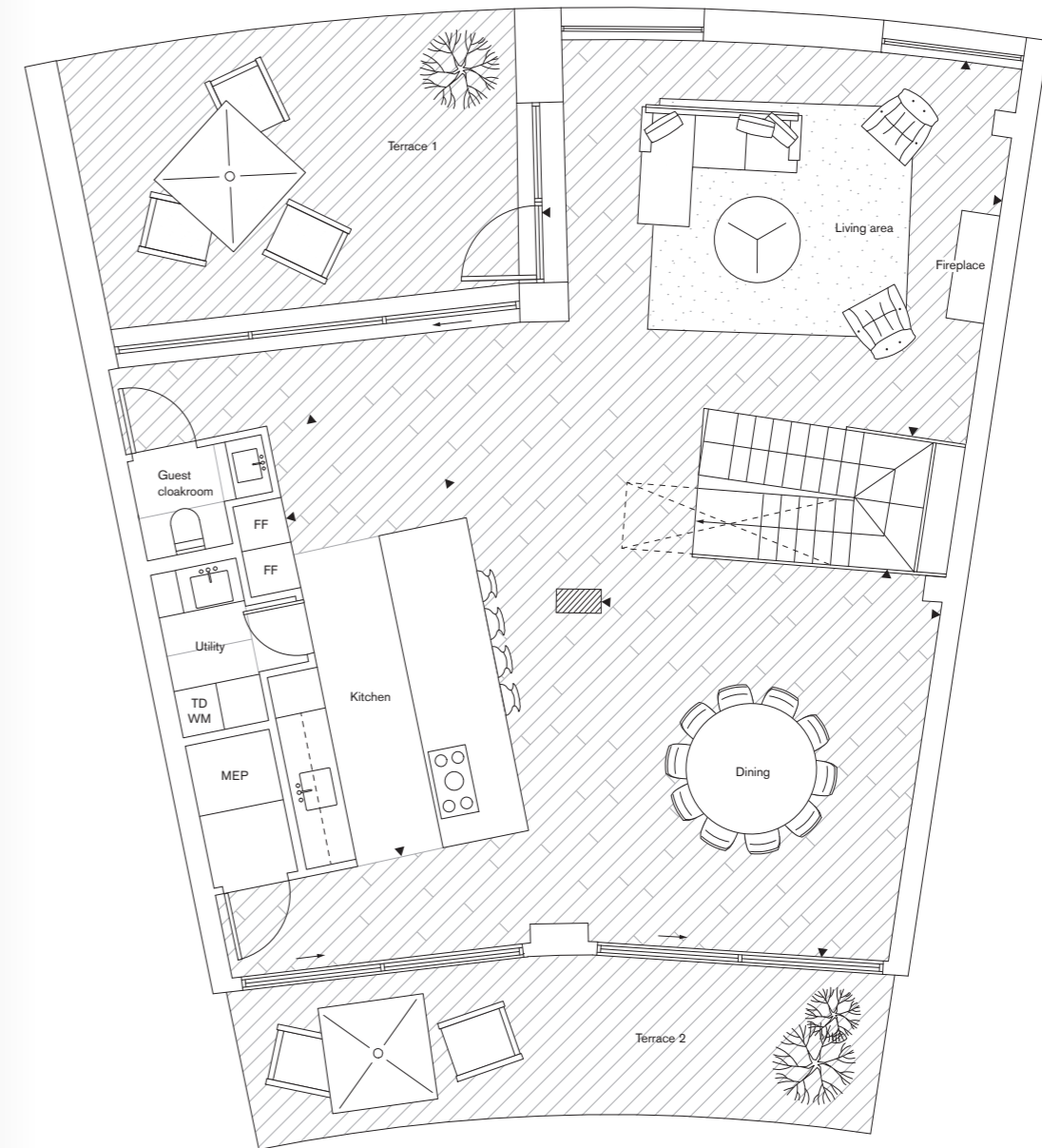
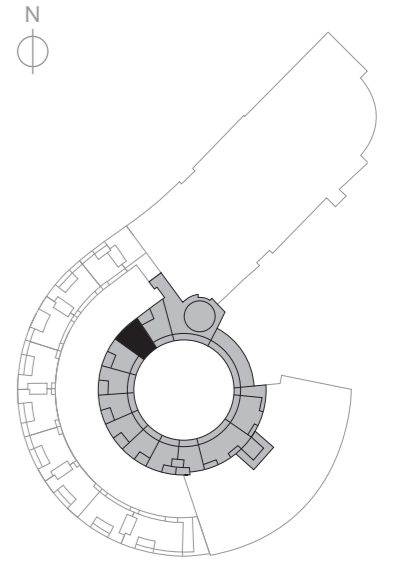
Net saleable area	sq m	sq ft
	96.90	1043
Room dimensions	m	
	ft	
Bedroom 1	3.70 × 4.40	12' 2" × 14' 5"
Bedroom 2	3.50 × 4.40	11' 6" × 14' 5"
Bedroom 3	2.60 × 3.90	8' 6" × 12' 10"

Please note: net saleable areas are measured as built whereas room and outdoor space dimensions are approximate and for guidance only.



Eighth floor

Net saleable area	sq m	sq ft
	114.70	1235
Room dimensions	m	
	ft	
Living area	6.40 × 5.20	21' 0" × 17' 1"
Kitchen	6.20 × 2.20	20' 4" × 7' 3"
Dining	4.30 × 5.30	14' 1" × 17' 5"
Outdoor space	sq m	sq ft
Terrace 1	25.40	273
Terrace 2	19.30	208



▨ Column ▨ Skylight

8
7
6
5
4
3
2
1
G

8
7
6
5
4
3
2
1
G

Allford Hall Monaghan Morris
Apartment H.706

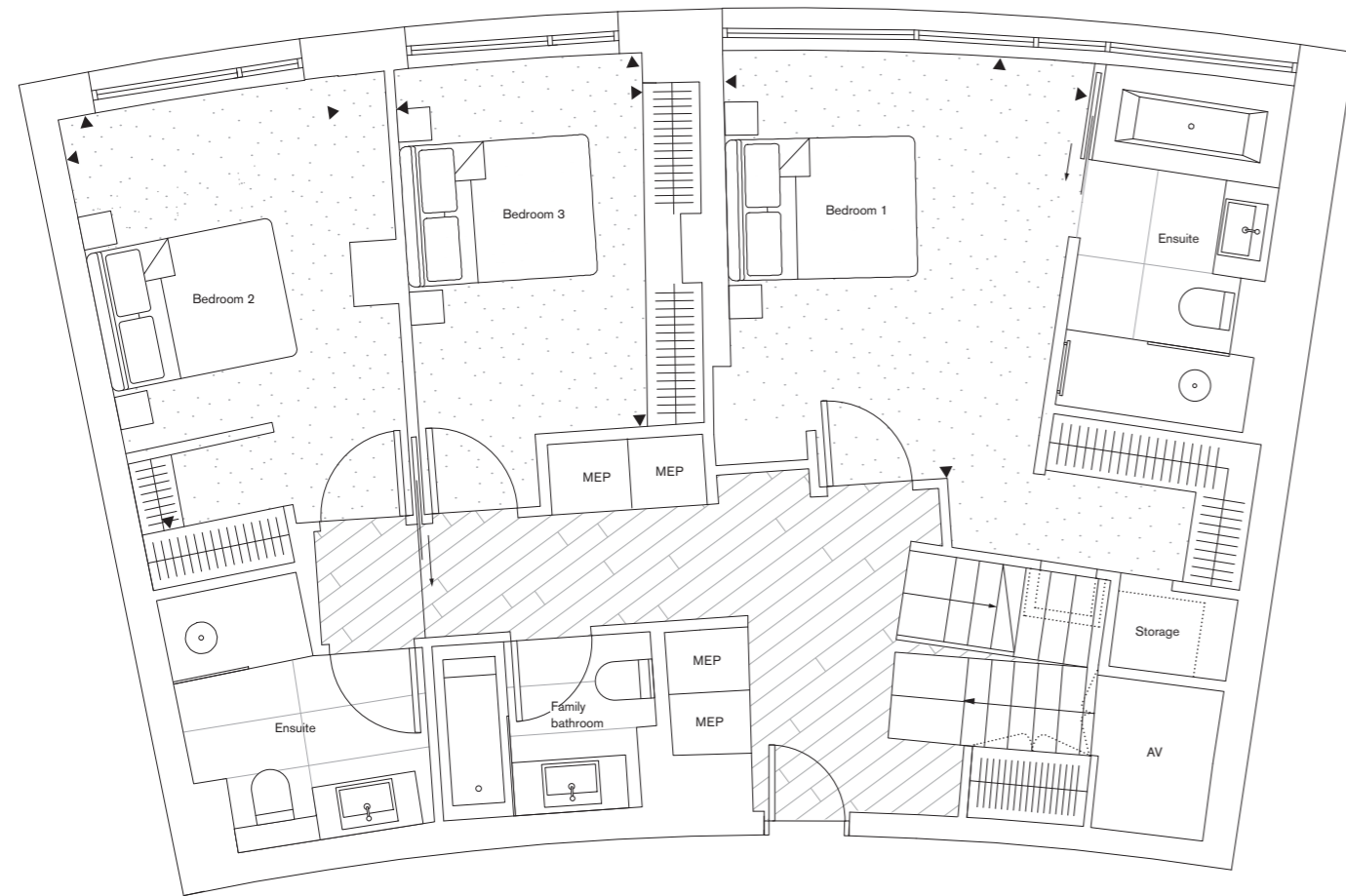
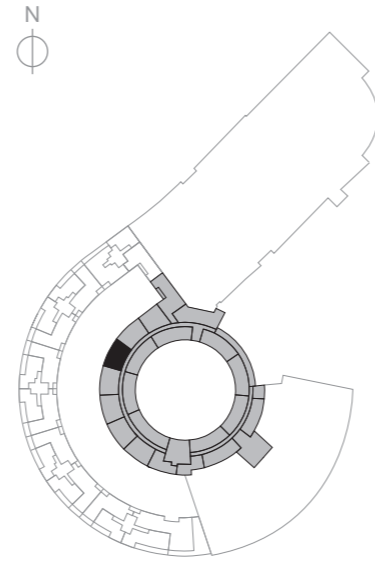
3 bedroom duplex

Net saleable area	sq m	sq ft
Total	212.10	2283
Ceiling height	m	
Max/Min	2.90/2.40	

Seventh floor

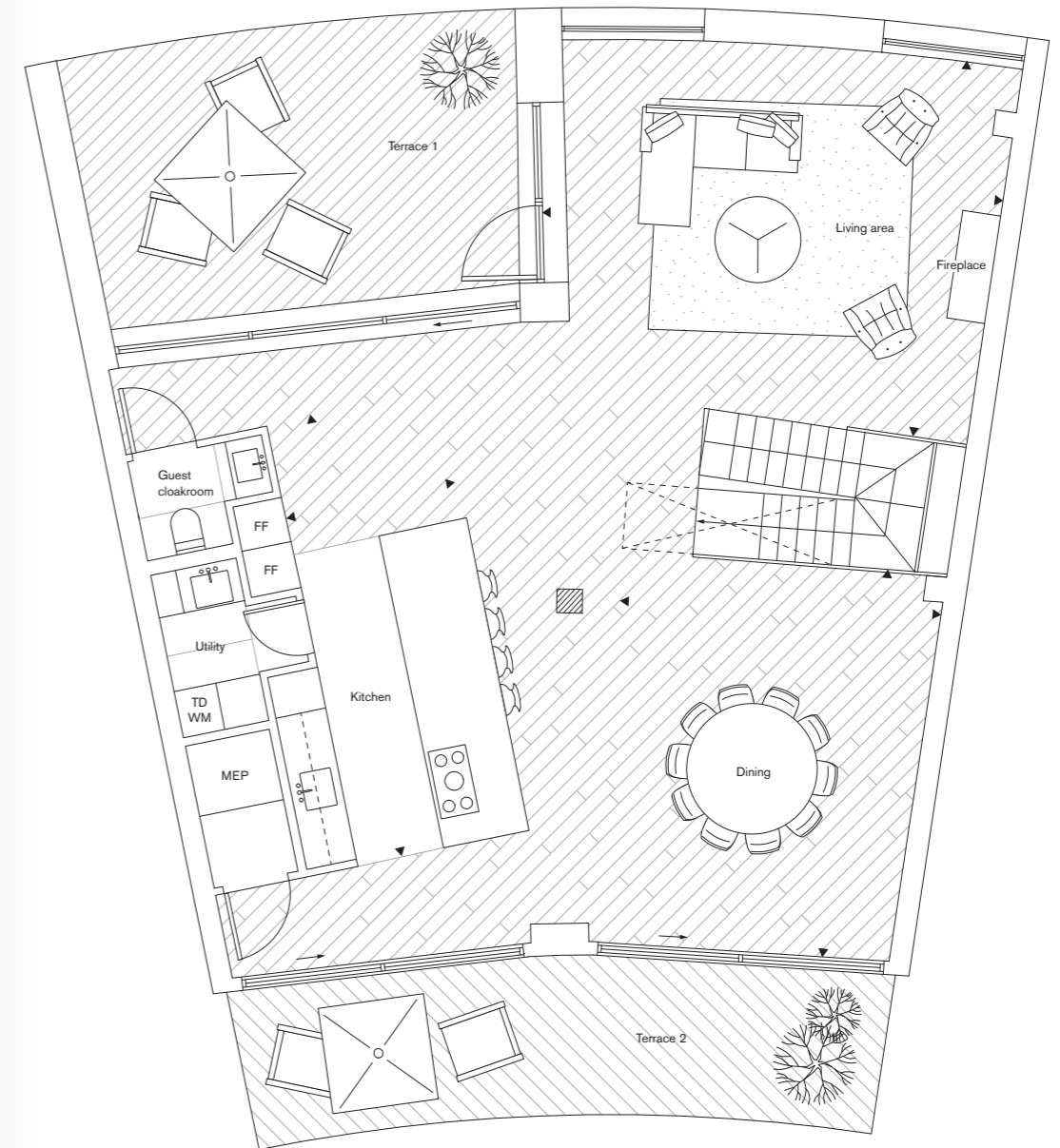
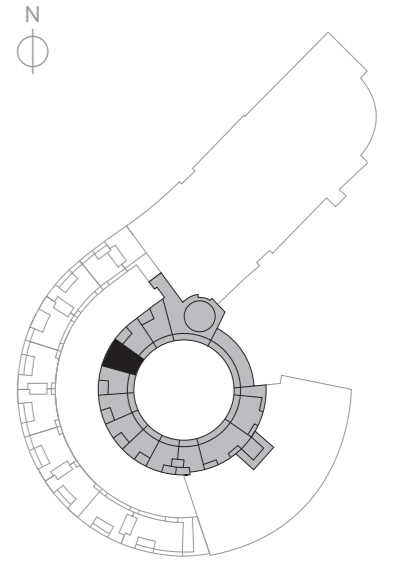
Net saleable area	sq m	sq ft
	97.10	1045
Room dimensions	m	
	ft	
Bedroom 1	3.80 × 4.40	12' 2" × 14' 5"
Bedroom 2	3.40 × 4.40	11' 2" × 14' 5"
Bedroom 3	2.80 × 3.90	9' 2" × 12' 10"

Please note: net saleable areas are measured as built whereas room and outdoor space dimensions are approximate and for guidance only.



Eighth floor

Net saleable area	sq m	sq ft
	115.00	1238
Room dimensions	m	
	ft	
Living area	6.40 × 5.20	21' 0" × 17' 1"
Kitchen	6.20 × 2.20	20' 4" × 7' 3"
Dining	4.20 × 5.30	13' 9" × 17' 5"
Outdoor space	sq m	sq ft
Terrace 1	25.40	273
Terrace 2	19.20	207



Column Skylight

8
7
6
5
4
3
2
1
G

8
7
6
5
4
3
2
1
G

Allford Hall Monaghan Morris
Apartment H.712

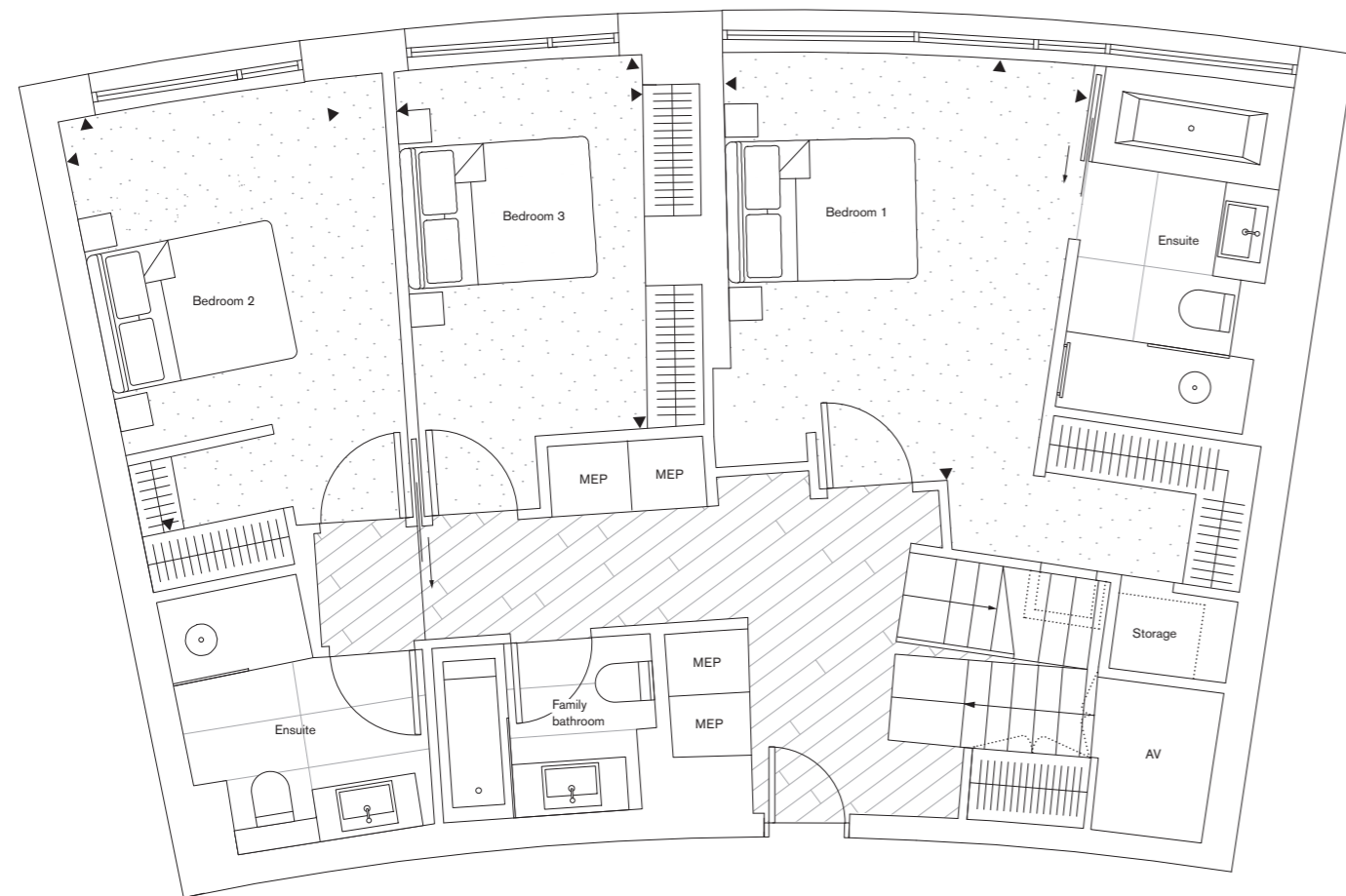
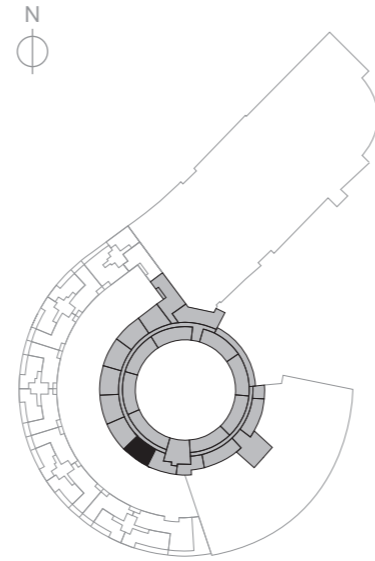
3 bedroom duplex

Net saleable area	sq m	sq ft
Total	209.70	2257
Ceiling height	m	
Max/Min	2.90/2.40	

Seventh floor

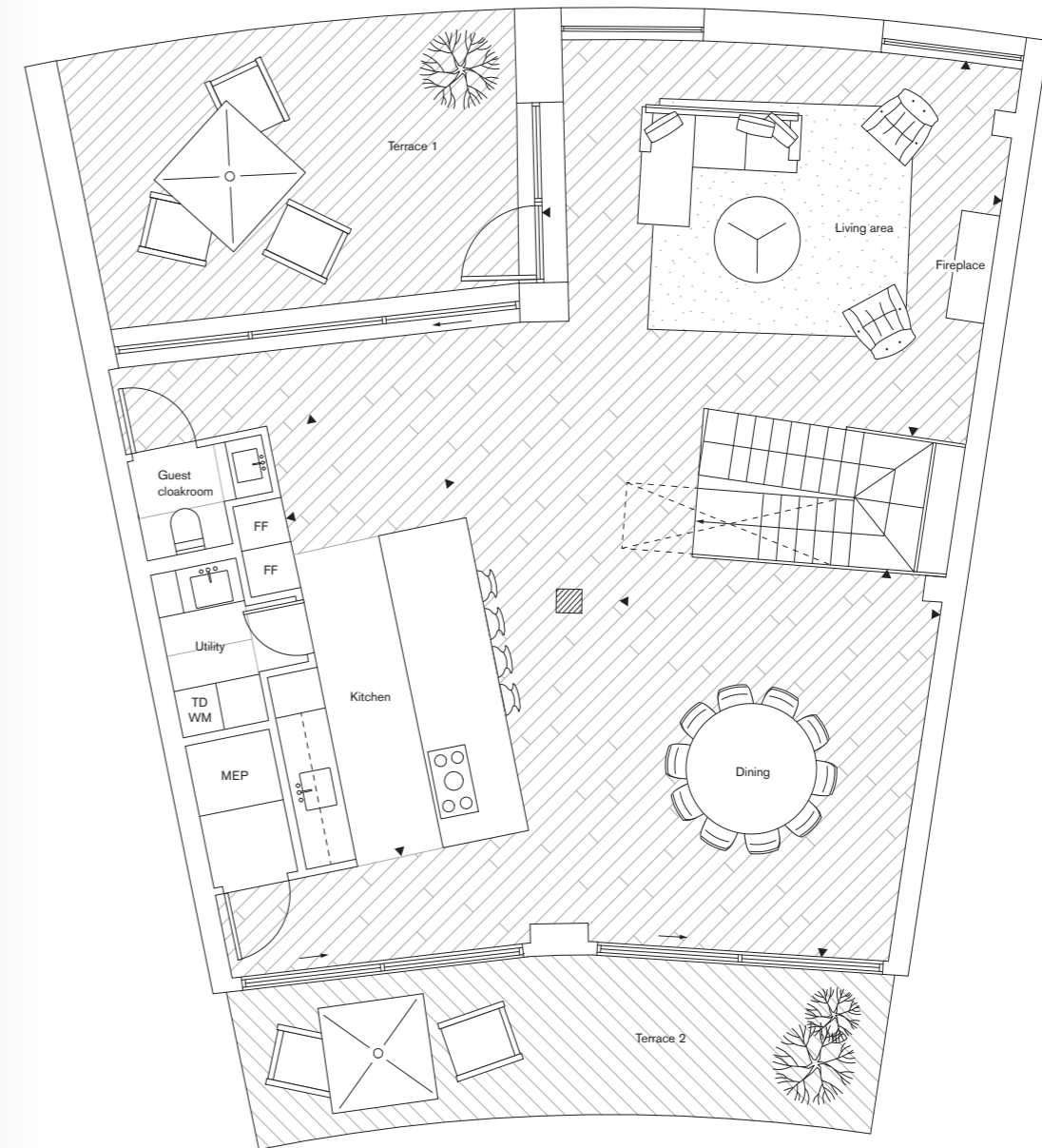
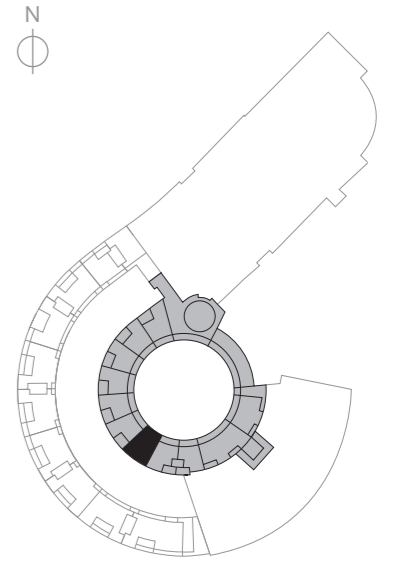
Net saleable area	sq m	sq ft
	94.90	1021
Room dimensions	m	
	ft	
Bedroom 1	3.80 × 4.40	12'6" × 14'5"
Bedroom 2	3.50 × 4.40	11'6" × 14'5"
Bedroom 3	2.80 × 3.90	9'2" × 12'10"

Please note: net saleable areas are measured as built whereas room and outdoor space dimensions are approximate and for guidance only.



Eighth floor

Net saleable area	sq m	sq ft
	114.80	1236
Room dimensions	m	
	ft	
Living area	6.40 × 5.20	21'0" × 17'1"
Kitchen	2.10 × 6.20	6'11" × 20'4"
Dining	4.40 × 4.80	14'5" × 15'9"
Outdoor space	sq m	sq ft
Terrace 1	24.90	268
Terrace 2	19.20	207



Column Skylight

8
7
6
5
4
3
2
1
G

8
7
6
5
4
3
2
1
G

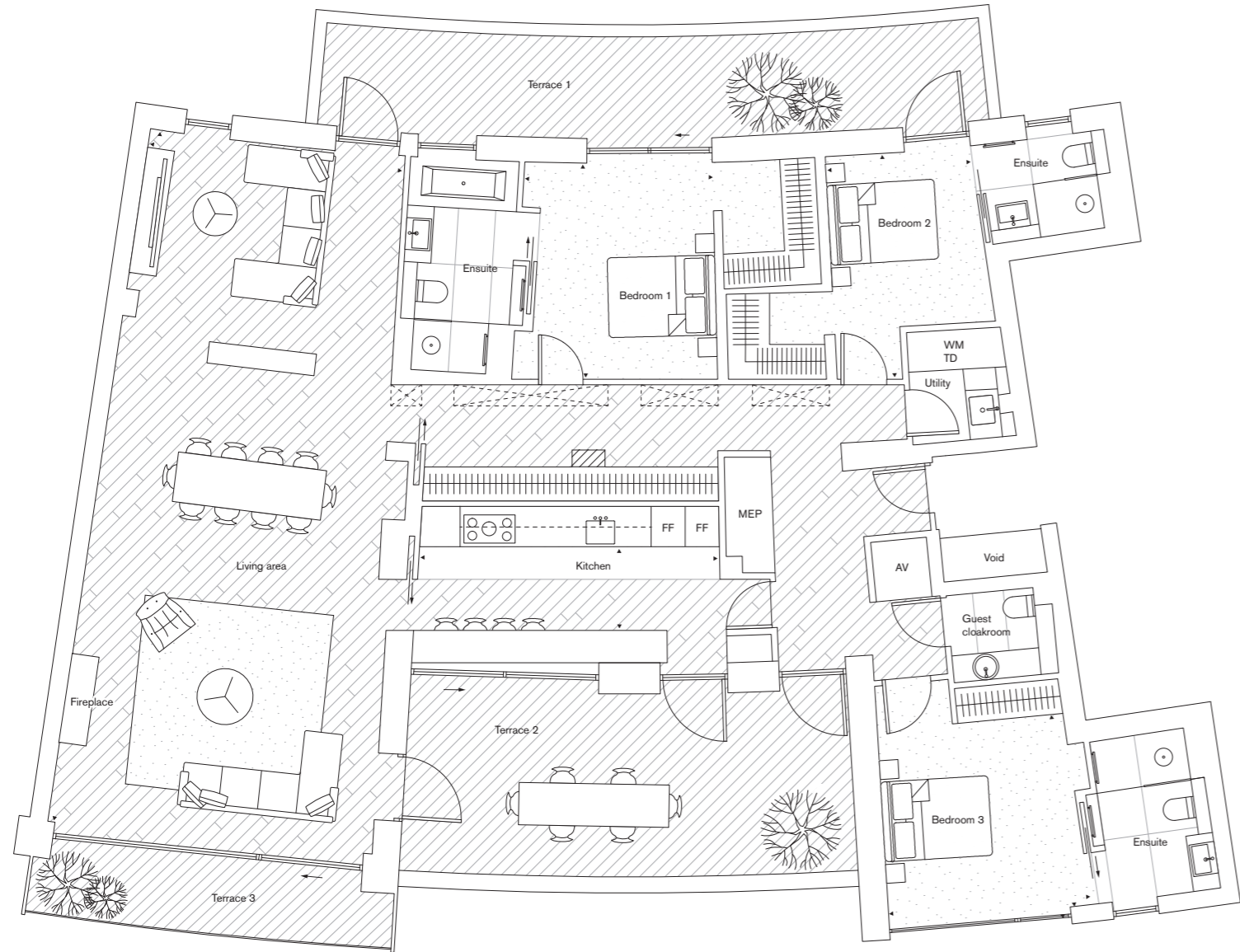
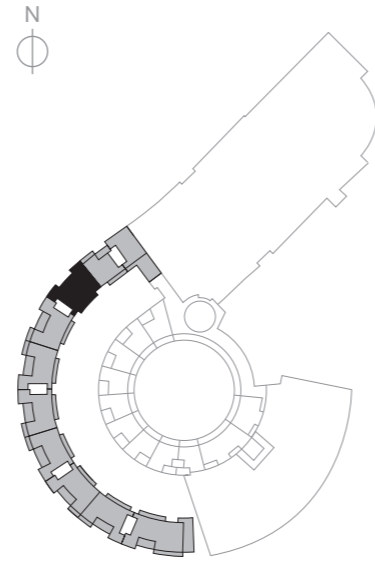
Allford Hall Monaghan Morris
Apartment C2.801

3 bedroom

Eighth floor

Net saleable area	sq m	sq ft
Total	203.30	2188
Ceiling height	m	
Max/Min	2.91/2.60	
Room dimensions	m	ft
Living area	4.90 × 13.00	16'1" × 42'8"
Kitchen	5.60 × 1.60	18'4" × 5'3"
Bedroom 1	3.50 × 4.00	11'6" × 13'1"
Bedroom 2	3.80 × 3.60	12'6" × 11'10"
Bedroom 3	2.80 × 4.20	9'2" × 13'9"
Outdoor space	sq m	sq ft
Terrace 1	23.10	249
Terrace 2	30.20	325
Terrace 3	9.30	100

Please note: net saleable areas are measured as built whereas room and outdoor space dimensions are approximate and for guidance only.



Column Skylight

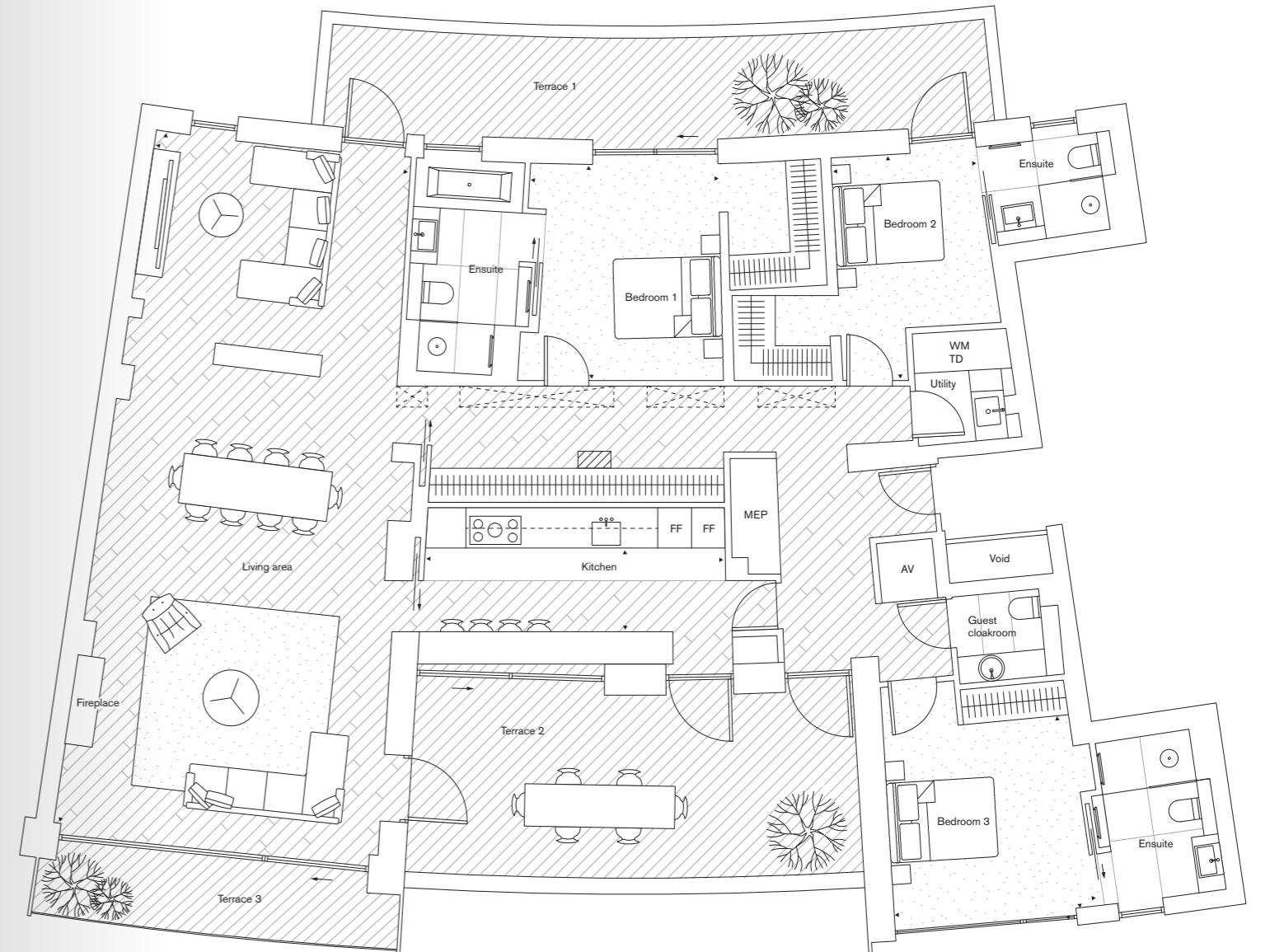
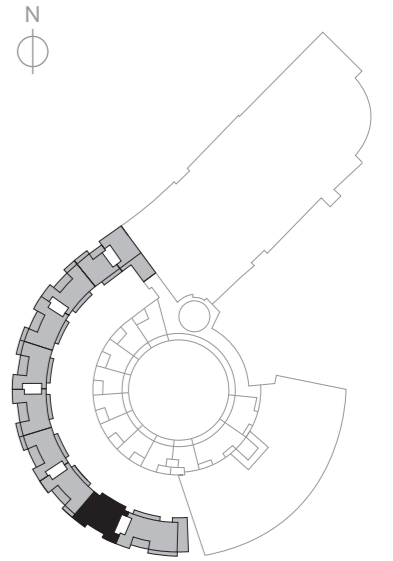
Allford Hall Monaghan Morris
Apartment C5.801

3 bedroom

Eighth floor

Net saleable area	sq m	sq ft
Total	202.80	2237
Ceiling height	m	
Max/Min	2.91/2.60	
Room dimensions	m	ft
Living area	4.90 × 13.00	16'1" × 42'8"
Kitchen	5.60 × 1.60	18'4" × 5'3"
Bedroom 1	3.50 × 4.00	11'6" × 13'1"
Bedroom 2	3.80 × 3.60	12'6" × 11'10"
Bedroom 3	2.80 × 4.20	9'2" × 13'9"
Outdoor space	sq m	sq ft
Terrace 1	23.10	249
Terrace 2	30.20	325
Terrace 3	9.30	100

Please note: net saleable areas are measured as built whereas room and outdoor space dimensions are approximate and for guidance only.



Column Skylight

Specification

Kitchens	<ul style="list-style-type: none"> – Molteni C and Dada Hi Line kitchen with matt lacquer finish doors – Laminam ceramic worktops and glass covered walnut splash-back – Feature walnut breakfast bar to Crescent apartments 	<ul style="list-style-type: none"> – Under-mounted stainless steel sink and deck-mounted tap – LED lighting integrated to underside of wall units
Integrated appliances	<ul style="list-style-type: none"> – Miele full-height fridge – Miele full-height freezer – Miele combination microwave oven – Miele multifunction oven – Miele steam oven – Miele induction hob 	<ul style="list-style-type: none"> – Concealed recirculating extractor hood – Boiling water tap – Miele dishwasher (x2 in Helios apartments) – Miele wine cooler (x2 in Helios apartments)
Utility room	<ul style="list-style-type: none"> – Molteni C and Dada units with matt lacquer finish doors – Terrazzo worktop and glazed splash-back with under-mounted stainless steel sink and deck-mounted tap 	<ul style="list-style-type: none"> – Miele washing machine – Miele tumble dryer
Master bathrooms	<ul style="list-style-type: none"> – Basaltina lavastone wall tiles to feature walls – Large-format tiles to other walls – Large-format porcelain tiled floor – Brushed brass fittings – Vanity unit with deck-mounted white basin and shelving – Wall-mounted mixer tap for basin – Demisting mirror 	<ul style="list-style-type: none"> – Heated towel rail – Wall-mounted white ceramic WC with concealed cistern – Shower enclosure with glazed screen, ceiling-mounted shower head and separate handheld shower – White steel bath with Corian enclosure, wall-mounted mixer taps and separate handheld shower
Secondary bathrooms	<ul style="list-style-type: none"> – Basaltina lavastone wall tiles to feature walls – Large-format porcelain tiles to other walls – Large-format porcelain tiled floor – Brushed brass fittings – Vanity unit with deck-mounted white basin and shelving – Wall-mounted mixer tap – Demisting mirror 	<ul style="list-style-type: none"> – Heated towel rail – Wall-mounted white WC with concealed cistern – Shower enclosure with glazed screen, ceiling-mounted shower head and separate handheld shower; or white steel bath with Corian enclosure, glazed shower screen, wall-mounted mixer taps, handheld shower and ceiling-mounted shower head
Guest cloakroom	<ul style="list-style-type: none"> – Porcelain tiled floor – Back-painted glass feature wall – Brushed brass fittings – Deck-mounted basin with mixer tap 	<ul style="list-style-type: none"> – Wall-mounted white WC with concealed cistern – Fitted mirror
Flooring	<ul style="list-style-type: none"> – High quality engineered timber to entrance hall, living space and hallways 	<ul style="list-style-type: none"> – Carpet to bedrooms – Laminam ceramic tiled floor to kitchen and utility rooms
Doors	<ul style="list-style-type: none"> – Full-height solid core timber entrance door and panel 	<ul style="list-style-type: none"> – Solid core painted internal doors – High quality ironmongery

AV	Audiovisual
FF	Fridge Freezer
MEP	Mechanical, Electrical, Plumbing
TD	Tumble Dryer
WM	Washing Machine

Ceilings	<ul style="list-style-type: none"> – Plasterboard ceilings to all rooms 	<ul style="list-style-type: none"> – Feature skylights (to hallway in Crescent apartments and above staircases in Helios)
Wardrobes	<ul style="list-style-type: none"> – Walk-in wardrobes (to master bedrooms and second bedrooms) with lined interiors, hanging rail, shelving and lighting (master bedrooms only) 	<ul style="list-style-type: none"> – Fitted wardrobes (to third bedrooms) with full-height lacquered doors, lined interiors, hanging rail and shelving
Decoration	<ul style="list-style-type: none"> – Painted finish to internal walls, ceiling, skirting and door frames 	
Balconies/terraces	<ul style="list-style-type: none"> – Composite decking – Glazed or rail balustrades – Exterior power to selected terraces 	<ul style="list-style-type: none"> – External water supply to selected terraces – External lighting to selected terraces
Heating and cooling	<ul style="list-style-type: none"> – Central energy centre providing metered hot water, heating and cooling to all apartments – Comfort cooling provided to kitchen, living/dining area and bedrooms 	<ul style="list-style-type: none"> – Underfloor heating throughout – Filtered fresh air supplied throughout via heat recovery ventilation system – Feature gas fire to living area
Lighting	<ul style="list-style-type: none"> – Energy efficient downlighters throughout – 5 amp lighting in reception rooms and master bedrooms 	<ul style="list-style-type: none"> – Provision for future installation of pendant fittings to selected locations – LED feature lighting in kitchen and bathrooms
Power, AV, data and telephone systems	<ul style="list-style-type: none"> – Audiovisual door entry phone system linked to concierge desk – Television, telephone and data points to living/dining, bedrooms and study (where applicable) 	<ul style="list-style-type: none"> – Television Centre is served by a selection of internet, telephone and television providers – Purchasers are responsible for their own connections and related costs – Wiring provision for future installation of electric blinds in bedrooms
Lifts	<ul style="list-style-type: none"> – Passenger lifts serving all floors and basement car park 	
Security	<ul style="list-style-type: none"> – Management and 24-hour security services provided from on-site management office – CCTV surveillance throughout public areas 	<ul style="list-style-type: none"> – Video entry phone system to all apartments linked to front of house management team
Amenities	<ul style="list-style-type: none"> – 25,000 sq ft leisure facility incorporating heated indoor pool, gym, sauna and steam rooms – Residents' lounge 	<ul style="list-style-type: none"> – Residents' screening room – Residents' meeting room – Private landscaped gardens
Car parking and storage	<ul style="list-style-type: none"> – Car parking at extra cost and subject to availability – Secure cycle storage 	<ul style="list-style-type: none"> – Storage units available at extra cost and subject to availability



These light-filled two- and three-bedroom apartments are laid out to play on the movement of the sun emanating from the sun god Helios, whose statue sits at the centre of Television Centre.

Each apartment is crafted from cool terrazzo, brushed brass accents and sumptuous marble, with bespoke perforated screens to create drama and depth. Brass rings set in the floor accentuate the curve of the building and pay homage to Helios.

Coffey Architects

Coffey Architects
Apartment H.713

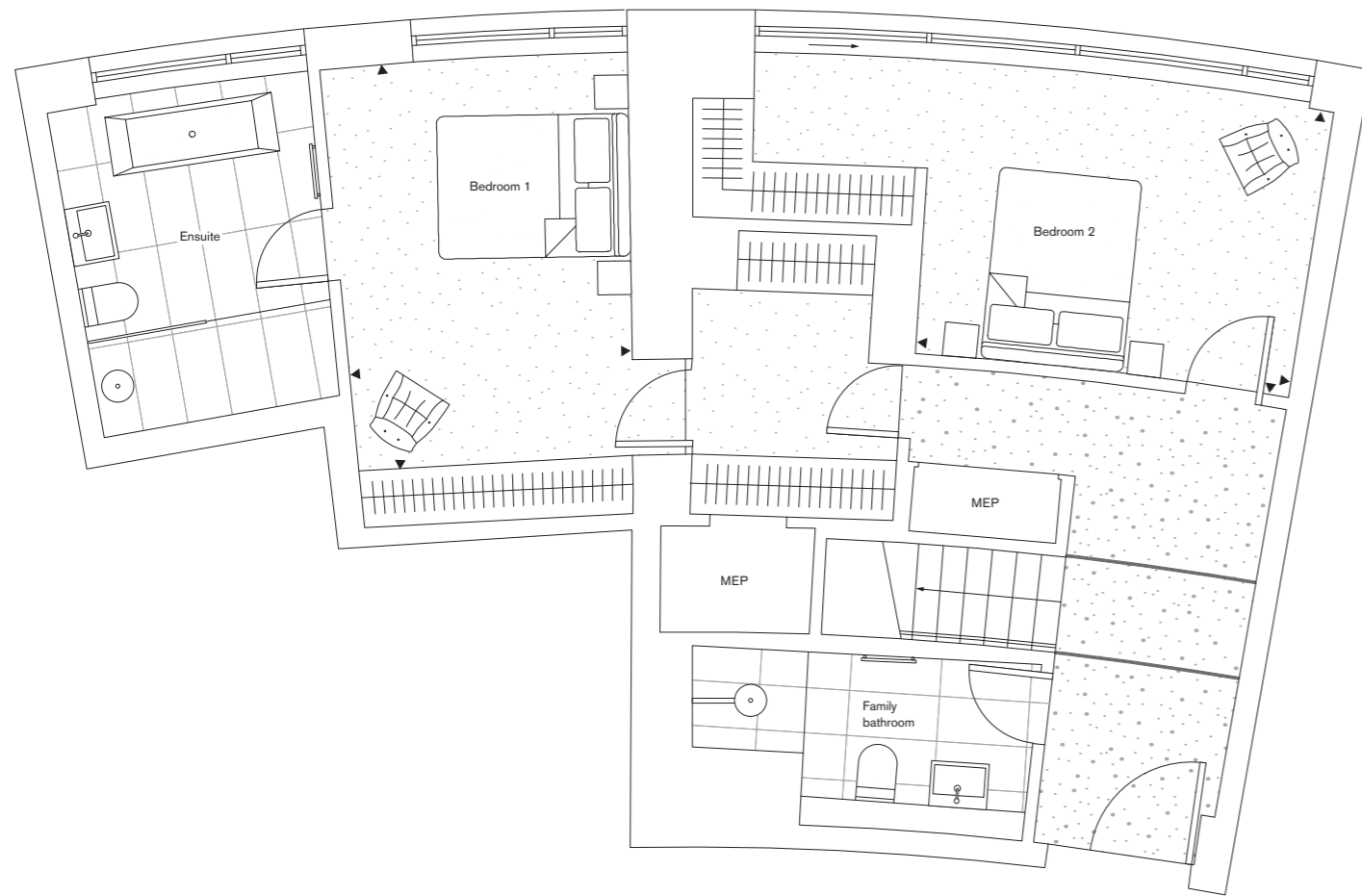
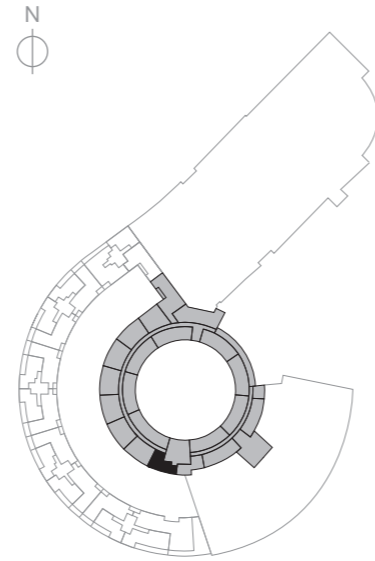
2 bedroom duplex

Net saleable area	sq m	sq ft
Total	183.30	1973
Ceiling height	m	
Max/Min	2.90/2.40	

Seventh floor

Net saleable area	sq m	sq ft
	77.30	832
Room dimensions	m	
	ft	
Bedroom 1	3.00 × 4.20	9'10" × 13'9"
Bedroom 2	3.80 × 3.00	12'6" × 9'10"

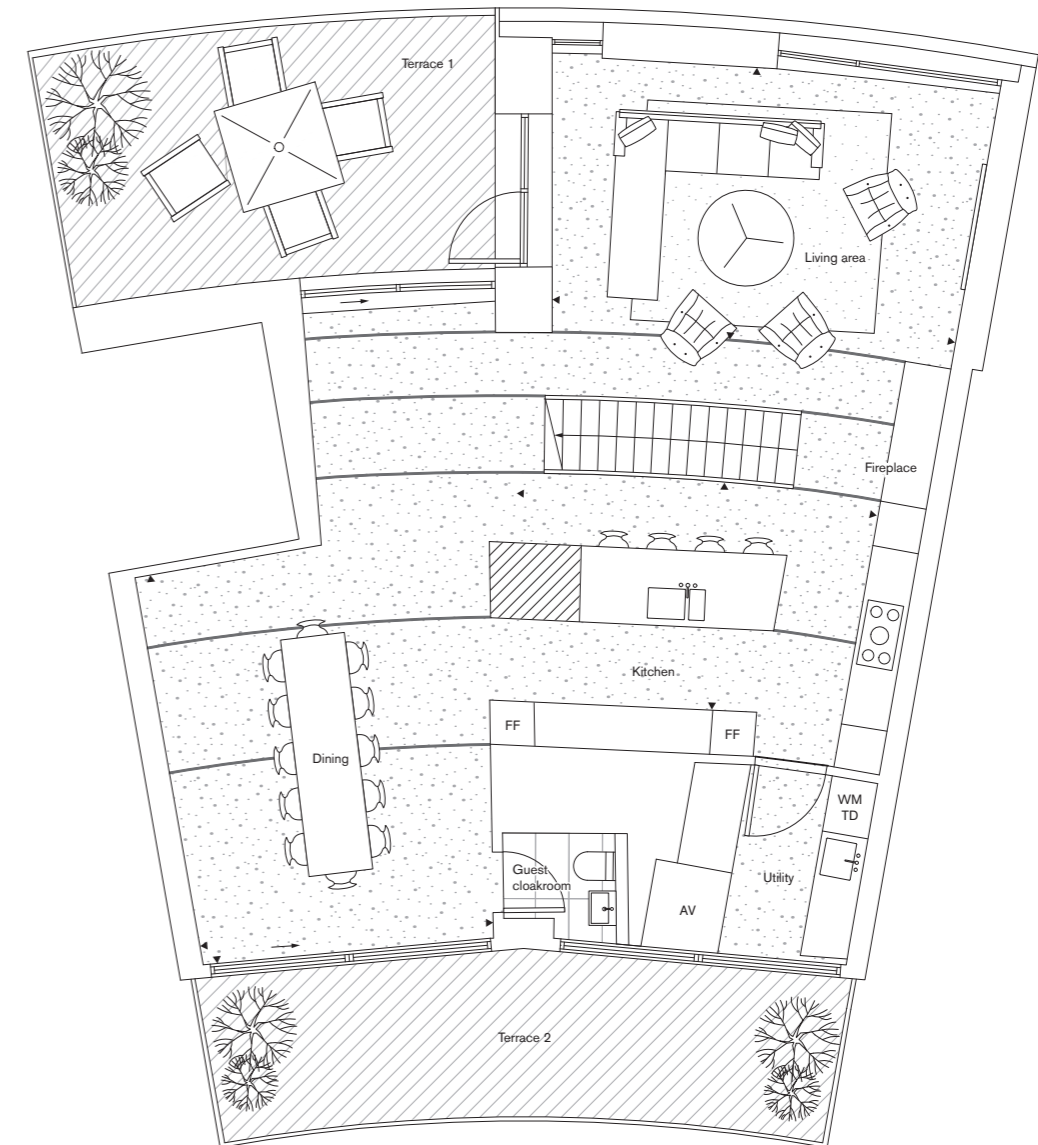
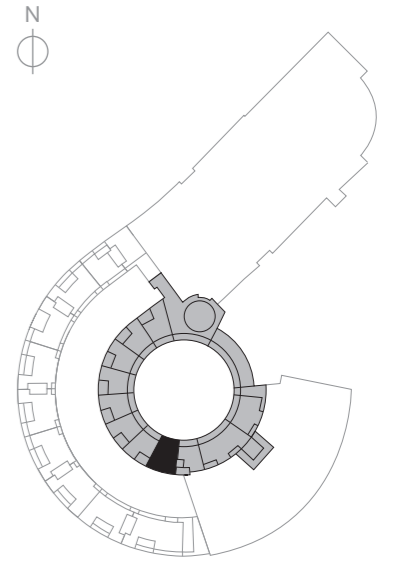
Please note: net saleable areas are measured as built whereas room and outdoor space dimensions are approximate and for guidance only.



■ Radiating brass trim

Eighth floor

Net saleable area	sq m	sq ft
	106.00	1141
Room dimensions	m	
	ft	
Living area	5.70 × 3.90	18'8" × 12'10"
Kitchen	5.00 × 3.20	16'5" × 10'6"
Dining	4.10 × 5.50	13'15" × 18'1"
Outdoor space	sq m	sq ft
Terrace 1	22.10	238
Terrace 2	20.00	215



▨ Column ■ Radiating brass trim

8
7
6
5
4
3
2
1
G

8
7
6
5
4
3
2
1
G

Kitchens	<ul style="list-style-type: none"> – Molteni C and Dada Hi Line kitchen with matt lacquer finish doors – Marble worktops and splashback – Under-mounted stainless steel sink and deck-mounted tap 	<ul style="list-style-type: none"> – LED lighting integrated to underside of wall units – Freestanding island unit with wrap-around marble worktop
Integrated appliances	<ul style="list-style-type: none"> – Miele full-height fridge – Miele full-height freezer – Miele combination microwave oven – Miele multifunction oven – Miele steam oven 	<ul style="list-style-type: none"> – Miele induction hob – Concealed recirculating extractor hood – 2x Miele dishwashers – 2x Miele wine coolers
Utility room	<ul style="list-style-type: none"> – Molteni C and Dada units with matt lacquer finish doors – Terrazzo worktop and glazed splashback with under-mounted stainless steel sink and deck-mounted boiling water tap 	<ul style="list-style-type: none"> – Miele washing machine – Miele tumble dryer
Master bathrooms	<ul style="list-style-type: none"> – Marble feature wall, recessed marble shelf and splashback – Large-format tiles to other walls – Large-format porcelain tiled floor – Brushed brass fittings – Mirrored vanity cabinet with internal shelves and demisting mirror – Wall-mounted white ceramic WC with concealed cistern 	<ul style="list-style-type: none"> – Heated towel rail – Wall-mounted white basin with mixer tap – Shower enclosure with glazed screen, ceiling-mounted shower head and separate handheld shower – White steel bath with Corian enclosure, wall-mounted mixer taps and separate handheld shower
Secondary bathrooms	<ul style="list-style-type: none"> – Recessed marble shelf and splashback – Large-format porcelain tiles to feature walls – Porcelain tiled floor – Brushed brass fittings – Mirrored vanity cabinet with internal shelves and demisting mirror – Wall-mounted white WC with concealed cistern 	<ul style="list-style-type: none"> – Heated towel rail – Wall-mounted white basin with mixer tap – Shower enclosure with glazed screen, ceiling-mounted shower head and separate handheld shower; or white steel bath with Corian enclosure, glazed shower screen, wall-mounted mixer taps, handheld shower and ceiling-mounted shower head
Guest cloakroom	<ul style="list-style-type: none"> – Porcelain tiled floor – Painted walls – Brushed brass fittings – Wall-mounted white WC with concealed cistern 	<ul style="list-style-type: none"> – Wall-mounted white basin with mixer tap – Fitted mirror – Recessed tiled shelf and splashback
Flooring	<ul style="list-style-type: none"> – Terrazzo with radiating inset brass trim detail to entrance, reception/dining area and kitchen – Carpet to bedrooms 	<ul style="list-style-type: none"> – Terrazzo tiled floor to utility room (Helios) – Porcelain tiled floor to utility room (Crescent)
Doors	<ul style="list-style-type: none"> – Full-height solid core timber entrance door and panel 	<ul style="list-style-type: none"> – Solid core white painted internal doors – High quality ironmongery
Ceilings	<ul style="list-style-type: none"> – Plasterboard ceilings to all rooms 	<ul style="list-style-type: none"> – Feature skylight(s) to entrance (Crescent apartments)

AV	Audiovisual
FF	Fridge Freezer
MEP	Mechanical, Electrical, Plumbing
TD	Tumble Dryer
WM	Washing Machine

Wardrobes	<ul style="list-style-type: none"> – Fitted walk-in wardrobes (to master bedrooms and Crescent second bedrooms) with timber-veneer doors, hanging rail, shelving and lighting (master bedrooms only) 	<ul style="list-style-type: none"> – Fitted wardrobes (to third bedrooms and Helios second bedroom) with full-height lacquered doors, hanging rail and shelving
Decoration	<ul style="list-style-type: none"> – Painted finish to internal walls, ceiling, skirtings and door frames 	<ul style="list-style-type: none"> – Bespoke perforated metal screen (to staircase in Helios apartments and kitchen in Crescent apartments)
Balconies/terraces	<ul style="list-style-type: none"> – Composite decking – Glazed or rail balustrades – Exterior power to selected terraces 	<ul style="list-style-type: none"> – External water supply to selected terraces – External lighting to selected terraces
Heating and cooling	<ul style="list-style-type: none"> – Central energy centre providing metered hot water, heating and cooling to all apartments – Comfort cooling provided to kitchen, living/dining area and bedrooms 	<ul style="list-style-type: none"> – Underfloor heating throughout – Filtered fresh air supplied throughout via heat recovery ventilation system – Feature gas fire to living area
Lighting	<ul style="list-style-type: none"> – Energy efficient LED downlighters throughout – 5 amp lighting in reception rooms and master bedrooms 	<ul style="list-style-type: none"> – Provision for future installation of pendant fittings to selected locations – LED feature lighting in kitchen and bathrooms
Power, AV, data and telephone systems	<ul style="list-style-type: none"> – Audiovisual door entry phone system linked to concierge desk – Television, telephone and data points to living/dining, bedrooms and study (where applicable) 	<ul style="list-style-type: none"> – Television Centre is served by a selection of internet, telephone and television providers – Purchasers are responsible for their own connections and related costs – Wiring provision for future installation of electric blinds in bedrooms
Lifts	<ul style="list-style-type: none"> – Passenger lifts serving all floors and basement car park 	
Security	<ul style="list-style-type: none"> – Management and 24-hour security services provided from on-site management office – CCTV surveillance throughout public areas 	<ul style="list-style-type: none"> – Video entry phone system to all apartments linked to front of house management team
Amenities	<ul style="list-style-type: none"> – 25,000 sq ft leisure facility incorporating heated indoor pool, gym, sauna and steam rooms – Residents' lounge 	<ul style="list-style-type: none"> – Residents' screening room – Residents' meeting room – Private landscaped gardens
Car parking and storage	<ul style="list-style-type: none"> – Car parking at extra cost and subject to availability – Secure cycle storage 	<ul style="list-style-type: none"> – Storage units available at extra cost and subject to availability



Scandinavian minimalism comes in a choice of two- and three-bedroom duplex and lateral layouts. London and Oslo-based practice Haptic has designed its apartments with a utility cube which defines and divides the open plan living spaces. These concrete clad monoliths serve a practical purpose too in concealing back of house functions to create simple, coherent elevations.

An urbane palette that mixes both warm and harder natural materials brings the Nordic aesthetic to life.

Haptic

Haptic Apartment H.702

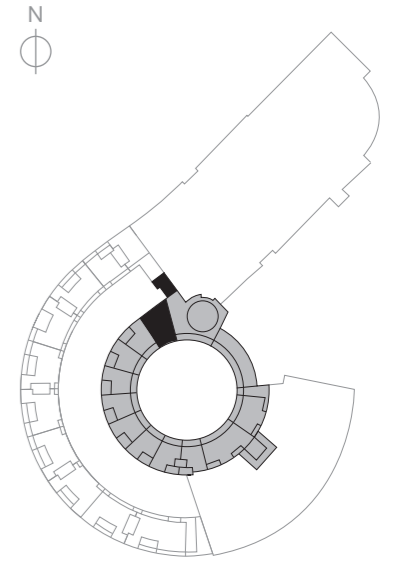
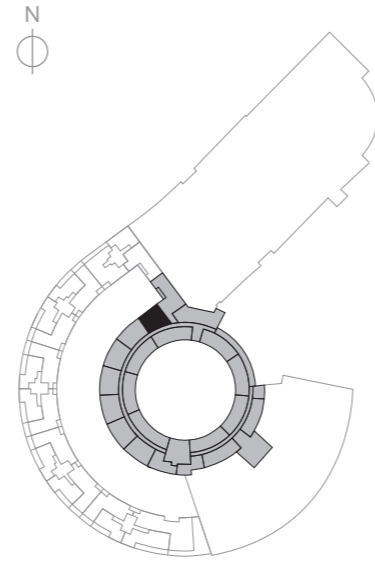
3 bedroom duplex

Net saleable area	sq m	sq ft
Total	218.70	2355
Ceiling height	m	
Max/Min	2.90/2.40	

Seventh floor

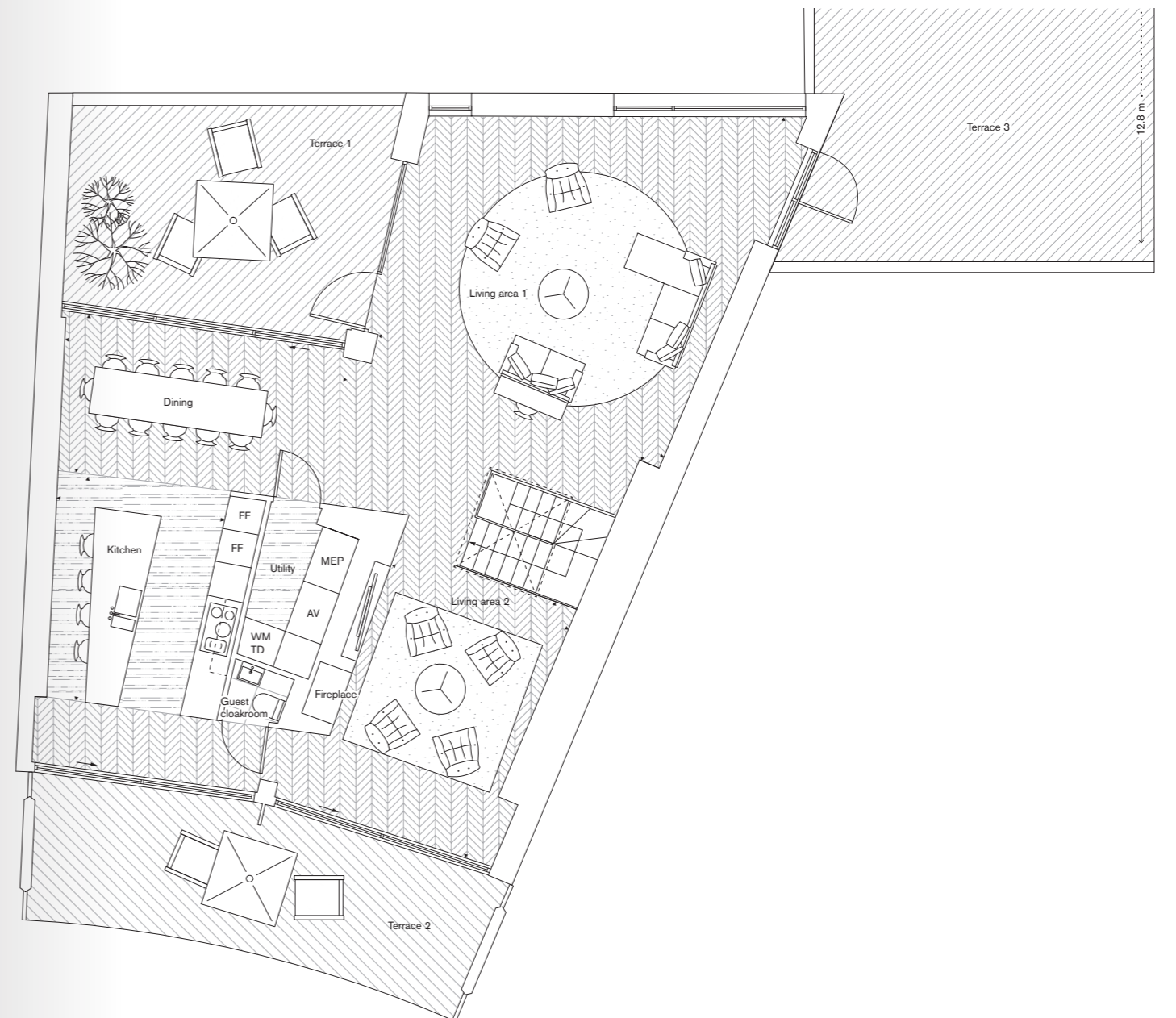
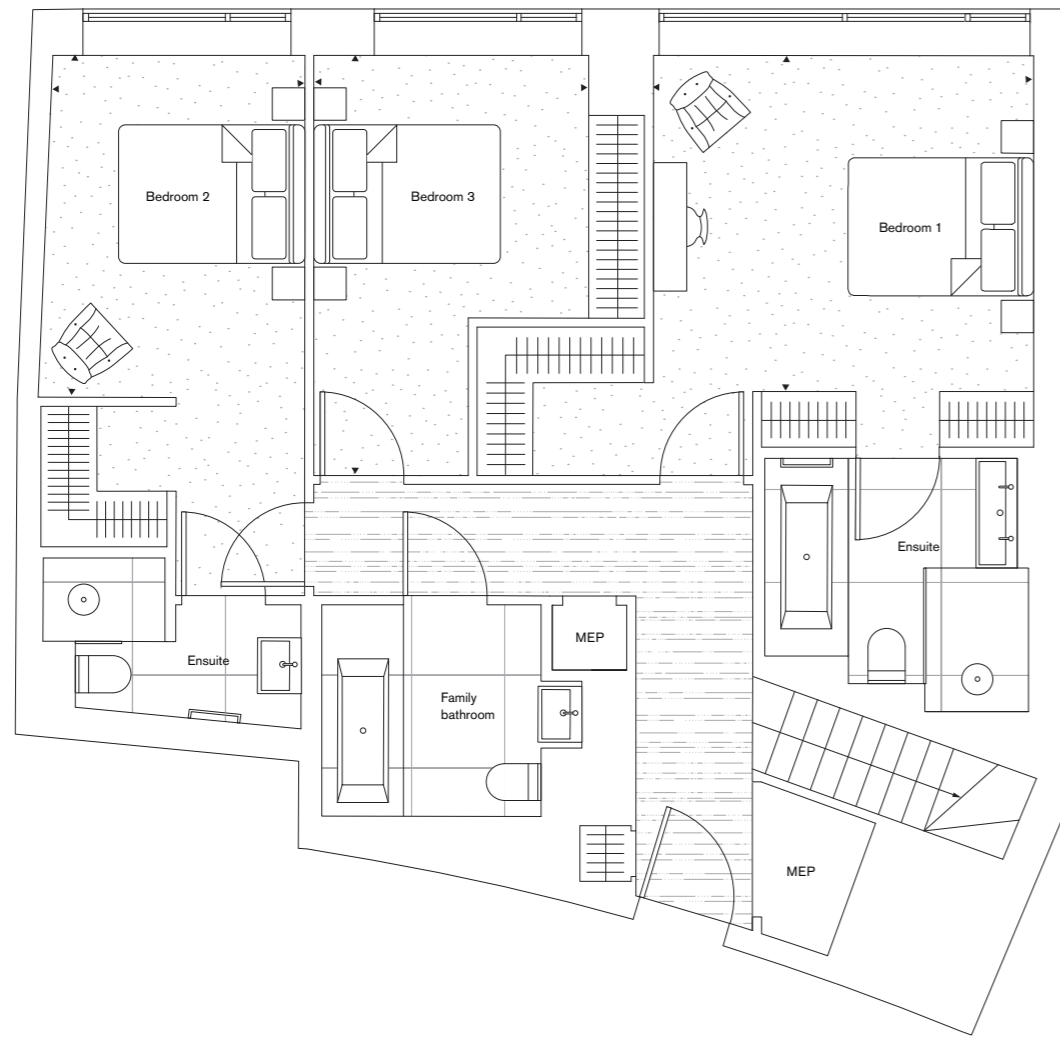
Net saleable area	sq m	sq ft
	92.30	994
Room dimensions	m	
	ft	
Bedroom 1	4.20 × 4.00	13'9" × 13'1"
Bedroom 2	3.00 × 4.50	9'10" × 14'9"
Bedroom 3	2.70 × 3.30	8'10" × 10'10"

Please note: net saleable areas are measured as built whereas room and outdoor space dimensions are approximate and for guidance only.



Eighth floor

Net saleable area	sq m	sq ft
	126.40	1361
Room dimensions	m	
	ft	
Living area 1	5.90 × 7.30	19'14" × 23'11"
Living area 2	3.80 × 5.00	12'6" × 16'5"
Kitchen	3.30 × 4.40	10'10" × 14'5"
Dining	5.40 × 2.90	17'9" × 9'6"
Outdoor space	sq m	sq ft
Terrace 1	25.30	272
Terrace 2	21.90	236
Terrace 3	84.80	913



8
7
6
5
4
3
2
1
G

8
7
6
5
4
3
2
1
G

Haptic Apartment H.707

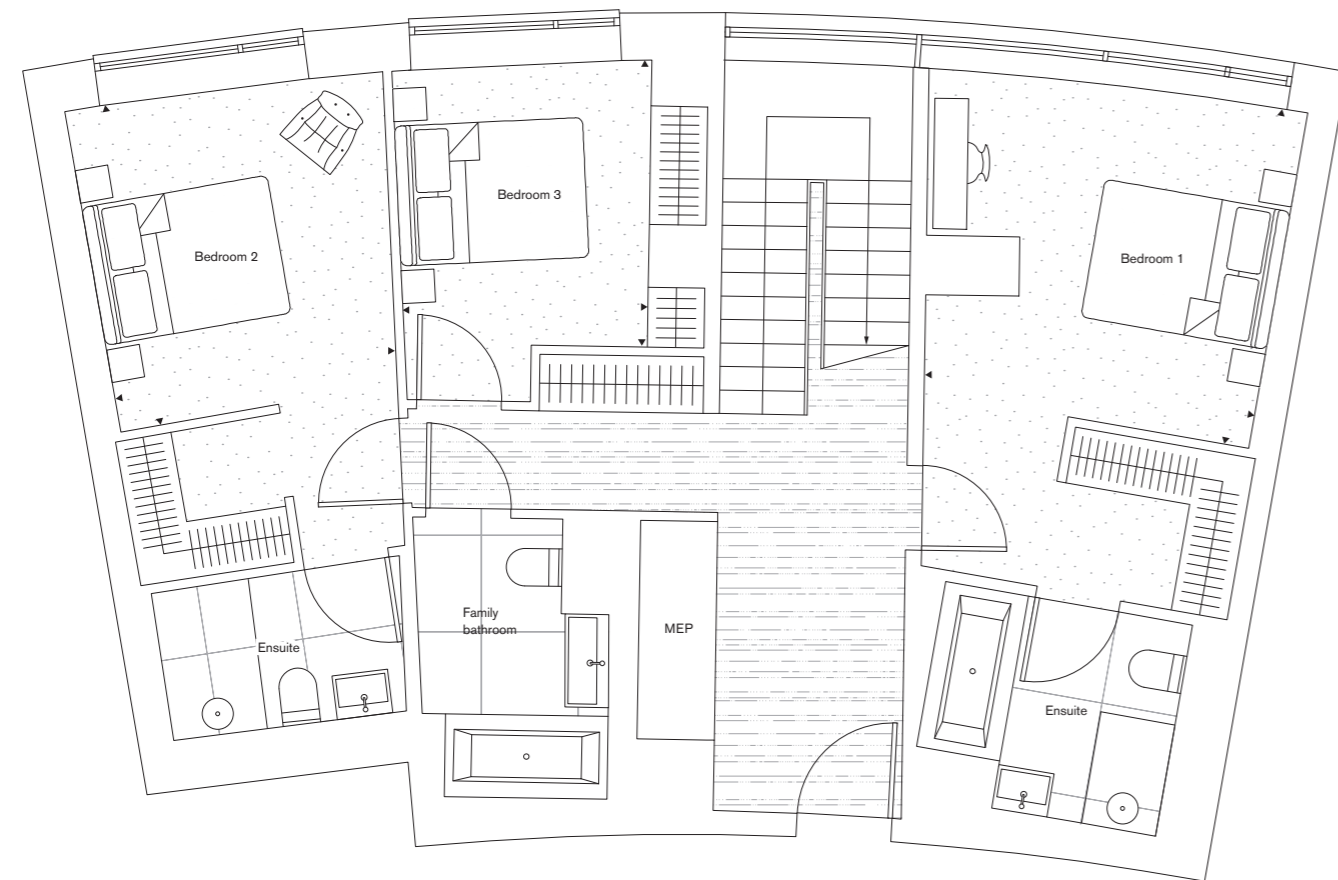
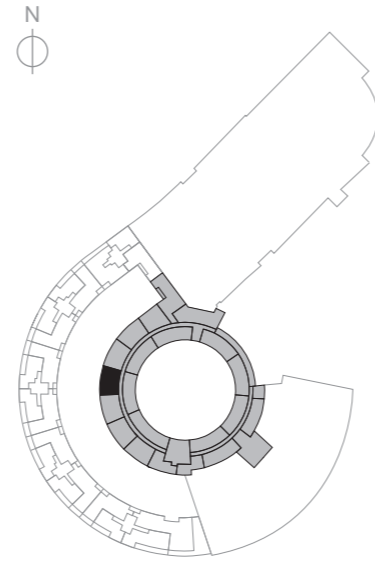
3 bedroom duplex

Net saleable area	sq m	sq ft
Total	209.10	2251
Ceiling height	m	
Max/Min	2.90/2.40	

Seventh floor

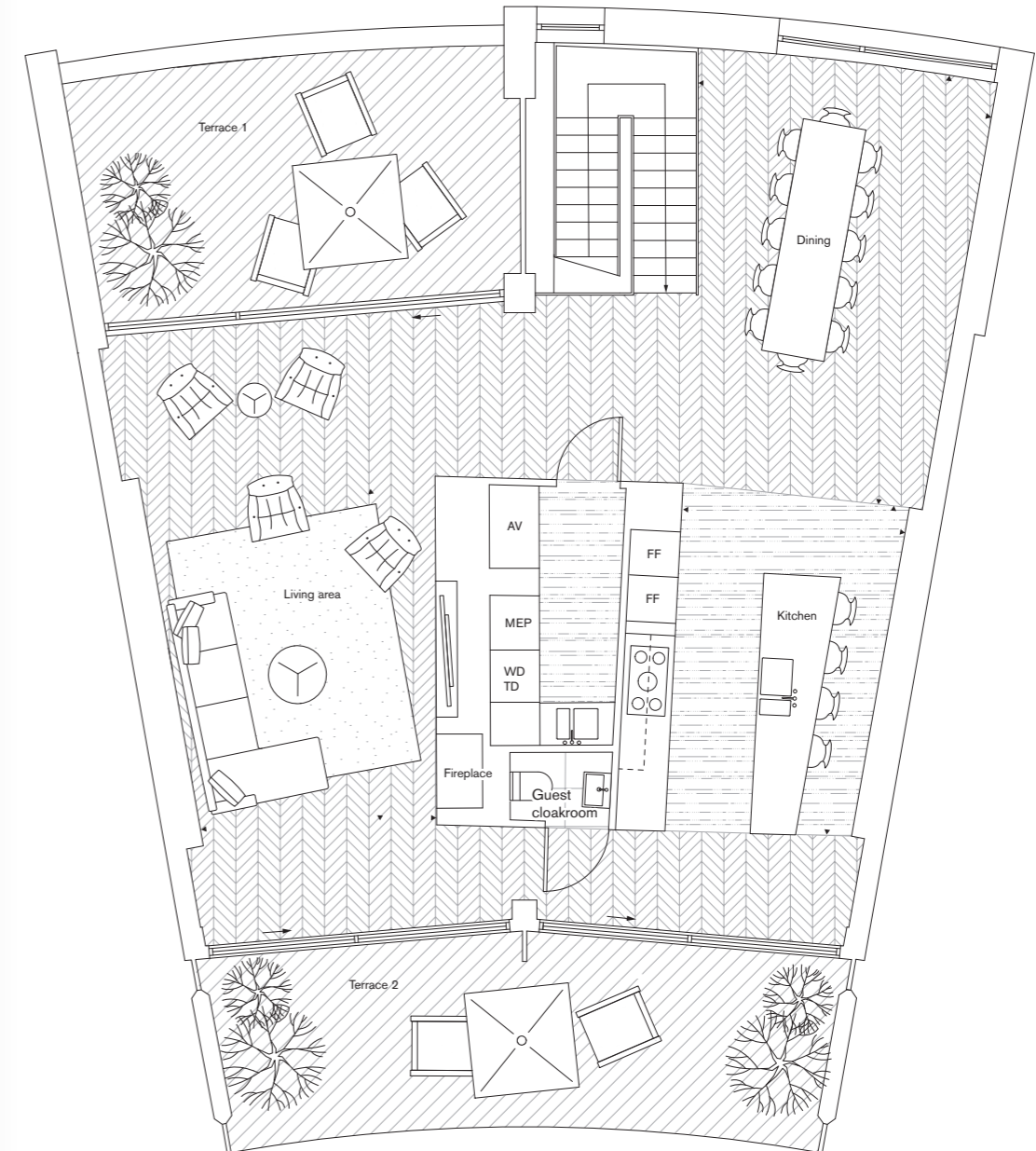
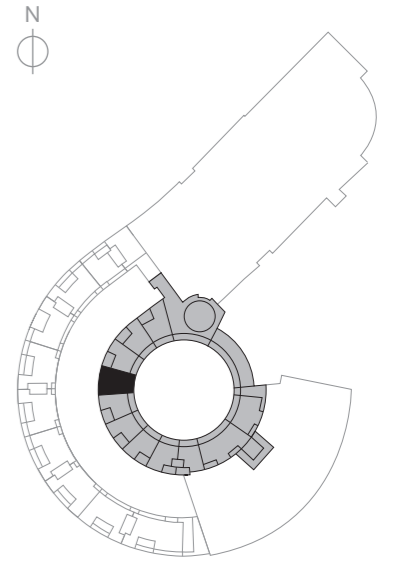
Net saleable area	sq m	sq ft
	94.00	1012
Room dimensions	m	
	ft	
Bedroom 1	3.60 × 3.60	11' 10" × 11' 10"
Bedroom 2	3.00 × 2.70	9' 10" × 8' 10"
Bedroom 3	3.50 × 3.10	11' 6" × 10' 2"

Please note: net saleable areas are measured as built whereas room and outdoor space dimensions are approximate and for guidance only.



Eighth floor

Net saleable area	sq m	sq ft
	115.10	1239
Room dimensions	m	
	ft	
Living area	4.70 × 4.50	15' 5" × 14' 9"
Kitchen	6.20 × 3.20	20' 4" × 10' 6"
Dining	4.70 × 4.30	15' 5" × 14' 1"
Outdoor space	sq m	sq ft
Terrace 1	21.40	230
Terrace 2	21.40	230



8
7
6
5
4
3
2
1
G

8
7
6
5
4
3
2
1
G

Haptic Apartment H.708

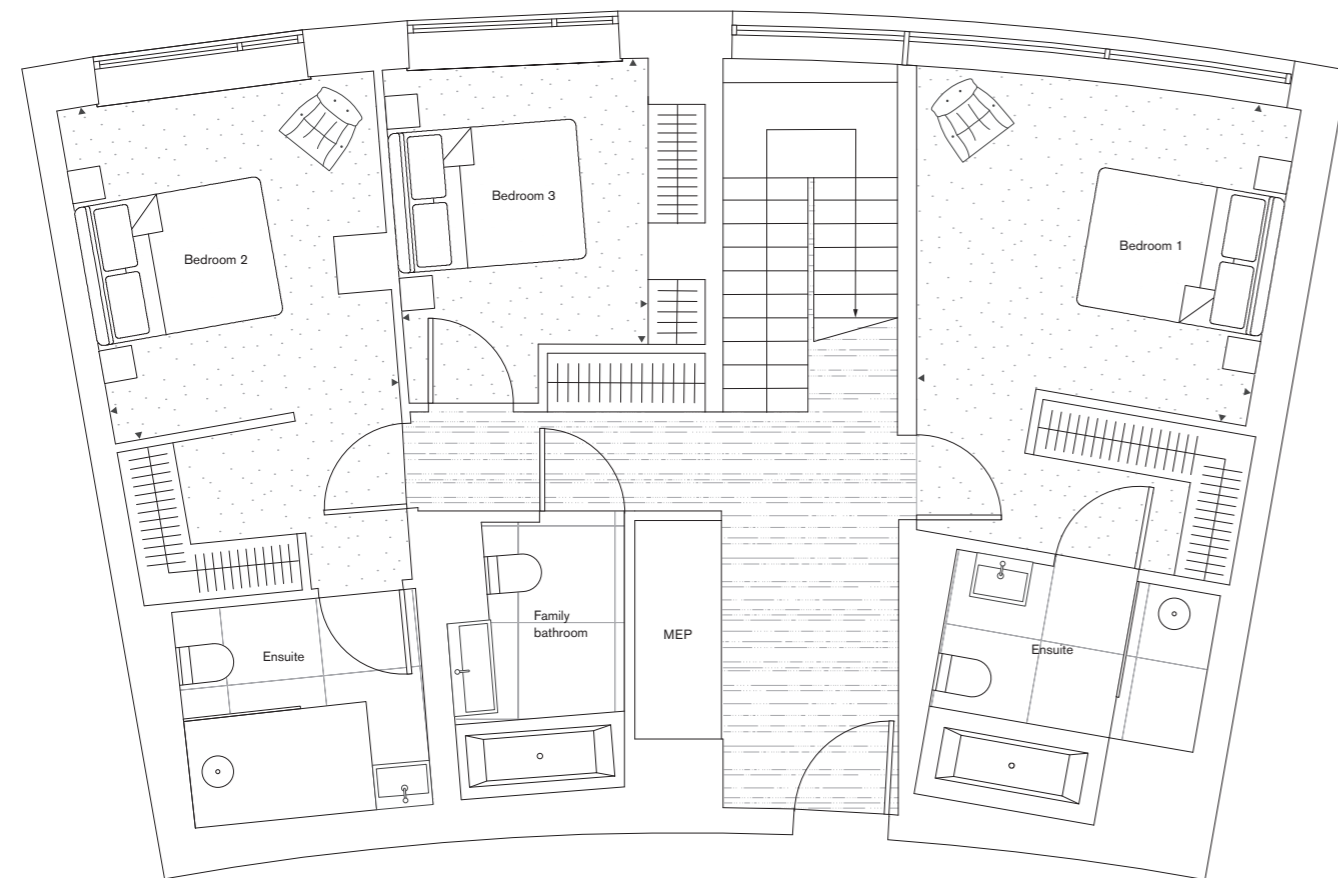
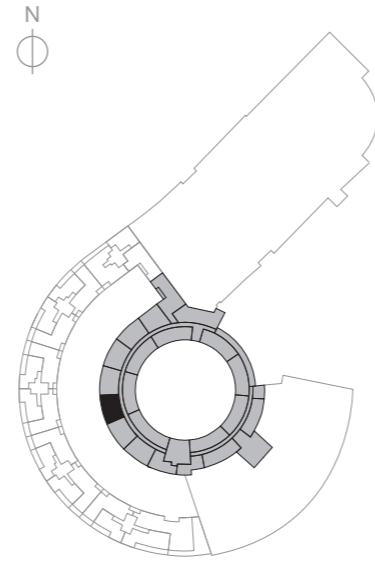
3 bedroom duplex

Net saleable area	sq m	sq ft
Total	211.70	2279
Ceiling height	m	
Max/Min	2.90/2.40	

Seventh floor

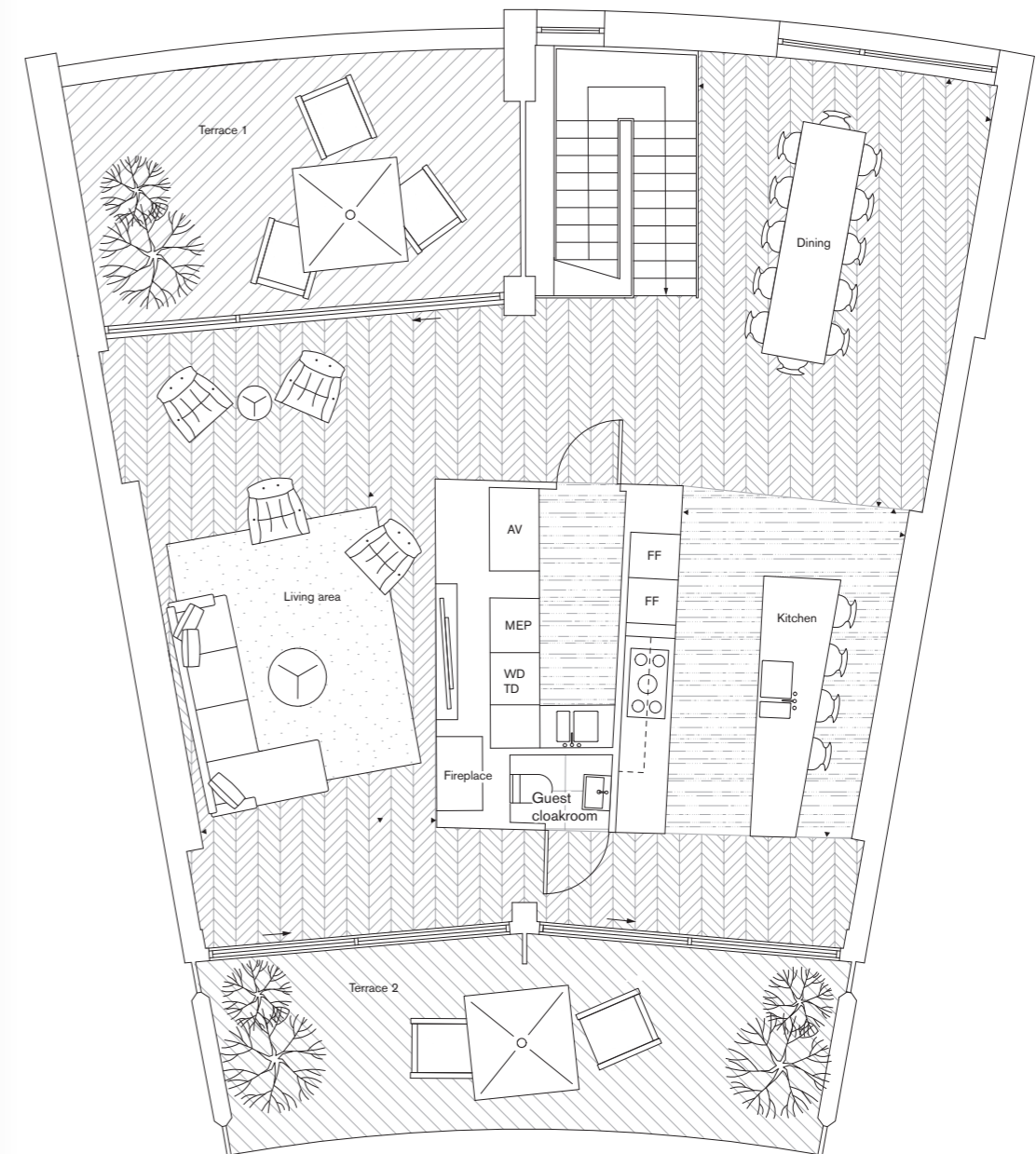
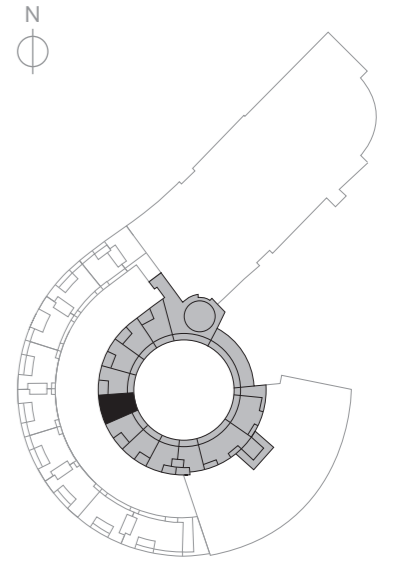
Net saleable area	sq m	sq ft
	97.00	1044
Room dimensions	m	
	ft	
Bedroom 1	3.40 × 3.70	11'20" × 12'2"
Bedroom 2	3.00 × 2.60	9'10" × 8'6"
Bedroom 3	3.50 × 3.10	11'6" × 10'2"

Please note: net saleable areas are measured as built whereas room and outdoor space dimensions are approximate and for guidance only.



Eighth floor

Net saleable area	sq m	sq ft
	114.70	1235
Room dimensions	m	
	ft	
Living area	4.90 × 3.70	16'1" × 12'2"
Kitchen	4.80 × 3.20	15'9" × 10'6"
Dining	6.10 × 4.40	20'0" × 14'5"
Outdoor space	sq m	sq ft
Terrace 1	20.10	216
Terrace 2	21.40	230



8
7
6
5
4
3
2
1
G

8
7
6
5
4
3
2
1
G

Haptic
Specification

Kitchens	<ul style="list-style-type: none"> – Molteni C and Dada Hi Line kitchen with timber-veneer finish doors – Nero Assoluto granite worktops and granite splash-back 	<ul style="list-style-type: none"> – Under-mounted stainless steel sink and deck-mounted tap – LED lighting integrated to underside of wall units
Integrated appliances	<ul style="list-style-type: none"> – Miele full-height fridge – Miele full-height freezer – Miele combination microwave oven – Miele multifunction oven – Miele steam oven 	<ul style="list-style-type: none"> – Miele induction hob – Concealed recirculating extractor hood – Miele dishwasher (x2 in Crescent apartments) – Miele wine cooler (x2 in selected apartments)
Utility room	<ul style="list-style-type: none"> – Molteni C and Dada units – Terrazzo worktop and glass splashbacks with under-mounted stainless steel sink and deck-mounted boiling water tap (to selected apartments) 	<ul style="list-style-type: none"> – Miele washing machine – Miele tumble dryer
Master bathrooms	<ul style="list-style-type: none"> – Large-format porcelain tiles and timber laminate to feature walls – Large-format porcelain tiled floor – Brushed stainless steel fittings – Vanity unit with deck-mounted white basin and drawers – Wall-mounted mixer tap for basin – Demisting mirror – Heated towel rail 	<ul style="list-style-type: none"> – Wall-mounted white ceramic WC with concealed cistern – Shower enclosure with glazed screen, ceiling-mounted shower head and separate handheld shower – White steel bath with Corian enclosure, wall-mounted mixer taps and separate handheld shower
Secondary bathrooms	<ul style="list-style-type: none"> – Large-format porcelain tiles and timber laminate to feature walls – Large-format porcelain tiled floor – Brushed stainless steel fittings – Vanity unit with deck-mounted white basin and shelving – Wall-mounted mixer tap for basin – Demisting mirror – Heated towel rail 	<ul style="list-style-type: none"> – Wall-mounted white WC with concealed cistern – Shower enclosure with glazed screen, ceiling-mounted shower head and separate handheld shower; or white steel bath with Corian enclosure, glazed shower screen, wall-mounted mixer taps, handheld shower and ceiling-mounted shower head
Guest cloakroom	<ul style="list-style-type: none"> – Large-format porcelain tiles to walls – Large-format porcelain tiled floor (Crescent apartments) or polished concrete floor (Helios apartments) – Brushed stainless steel fittings 	<ul style="list-style-type: none"> – Wall-mounted white WC with concealed cistern – Deck-mounted basin with mixer tap – Fitted mirror
Flooring	<ul style="list-style-type: none"> – Polished concrete to entrance hall, kitchen and utility room – Carpet to bedrooms 	<ul style="list-style-type: none"> – High quality engineered timber to living/dining area
Doors	<ul style="list-style-type: none"> – Full-height solid core timber entrance door and panel – High quality ironmongery 	<ul style="list-style-type: none"> – Solid core white painted and timber-veneer internal doors
Ceilings	<ul style="list-style-type: none"> – Plasterboard ceilings to all rooms 	

AV	Audiovisual
FF	Fridge Freezer
MEP	Mechanical, Electrical, Plumbing
TD	Tumble Dryer
WM	Washing Machine

Wardrobes	<ul style="list-style-type: none"> – Fitted walk-in wardrobes (to master bedrooms and second bedrooms) with timber-veneer interiors, hanging rail, shelving and lighting (master bedrooms only) 	<ul style="list-style-type: none"> – Fitted wardrobes (to third bedrooms) with full height lacquered doors, timber-veneer interiors, hanging rail and shelving
Decoration	<ul style="list-style-type: none"> – Feature timber-veneer wall panelling to entrance hall – Feature concrete wall panelling to utility block 	<ul style="list-style-type: none"> – Painted finish to remaining internal walls and ceiling – White painted timber skirting and door frames
Balconies/terraces	<ul style="list-style-type: none"> – Composite decking – Glazed or rail balustrades – Exterior power to selected terraces 	<ul style="list-style-type: none"> – External water supply to selected terraces – External lighting to selected terraces
Heating and cooling	<ul style="list-style-type: none"> – Central energy centre providing metered hot water, heating and cooling to all apartments – Comfort cooling provided to kitchen, living/dining area and bedrooms 	<ul style="list-style-type: none"> – Underfloor heating throughout – Filtered fresh air supplied throughout via heat recovery ventilation system – Feature gas fire to living area
Lighting	<ul style="list-style-type: none"> – Energy efficient LED down-lighters throughout – 5 amp lighting in reception rooms and master bedrooms 	<ul style="list-style-type: none"> – Provision for future installation of pendant fittings to selected locations – LED feature lighting in kitchen and bathrooms
Power, AV, data and telephone systems	<ul style="list-style-type: none"> – Audiovisual door entry phone system linked to concierge desk – Television, telephone and data points to living/dining, bedrooms and study (where applicable) 	<ul style="list-style-type: none"> – Television Centre is served by a selection of internet, telephone and television providers – Purchasers are responsible for their own connections and related costs – Wiring provision for future installation of electric blinds in bedrooms
Lifts	<ul style="list-style-type: none"> – Passenger lifts serving all floors and basement car park 	
Security	<ul style="list-style-type: none"> – Management and 24-hour security services provided from on-site management office – CCTV surveillance throughout public areas 	<ul style="list-style-type: none"> – Video entry phone system to all apartments linked to front of house management team
Amenities	<ul style="list-style-type: none"> – 25,000 sq ft leisure facility incorporating heated indoor pool, gym, sauna and steam rooms – Residents' lounge 	<ul style="list-style-type: none"> – Residents' screening room – Residents' meeting room – Private landscaped gardens
Car parking and storage	<ul style="list-style-type: none"> – Car parking at extra cost and subject to availability – Secure cycle storage 	<ul style="list-style-type: none"> – Storage units available at extra cost and subject to availability



Piercy&Company has conceived a selection of two- and three-bedroom duplex apartments which feature open plan living spaces across the upper floors to best maximise aspect and natural light.

The focal point of the interiors is the inventive use of traditional materials and exquisite detailing. Feature walls crafted from a single slab of Italian marble evoke the natural curve of the buildings, and are echoed in the fluted walnut encasing the free-standing kitchen islands and treads on the floating staircases.

Piercy&Company

Apartment H.710

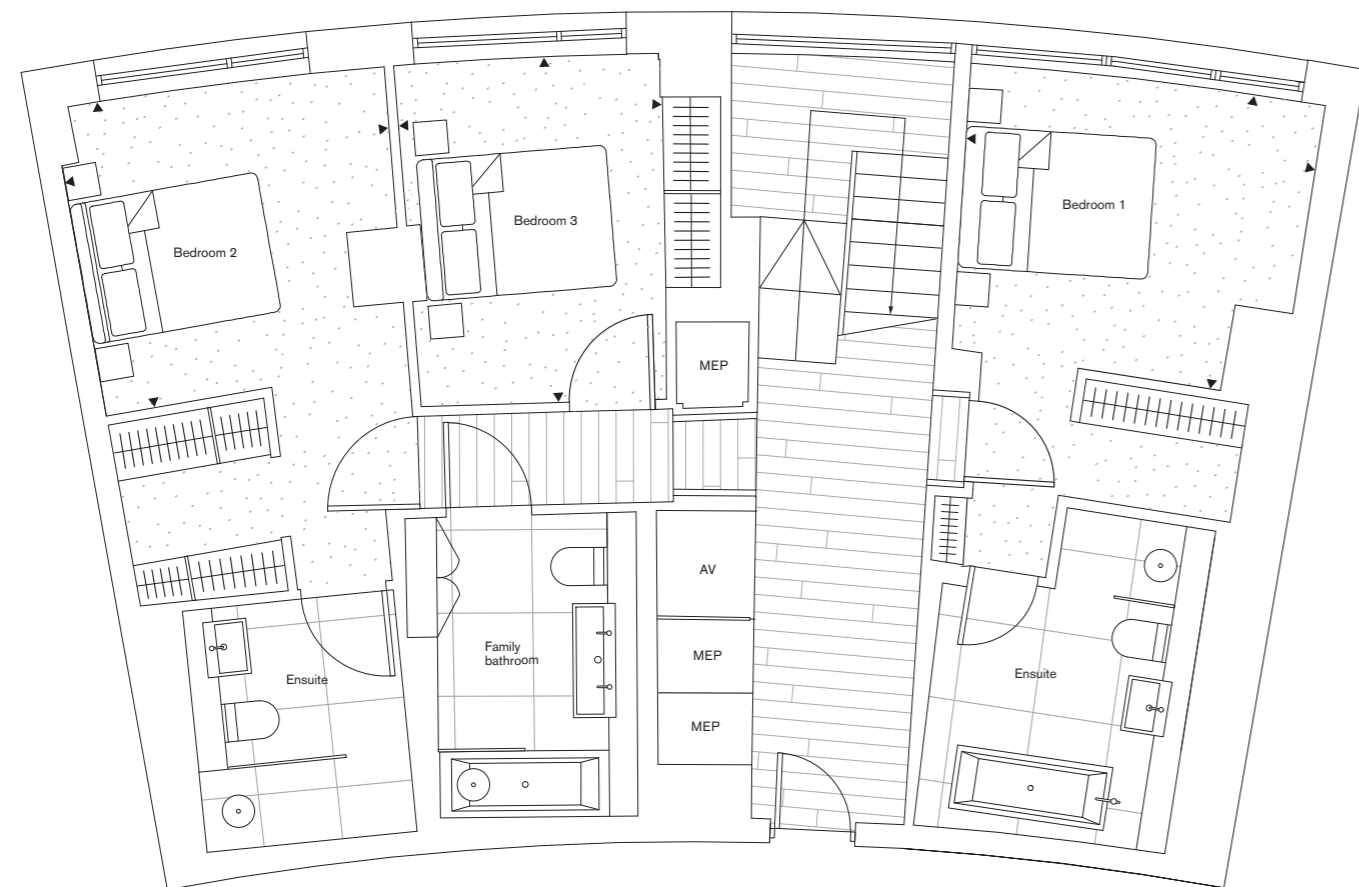
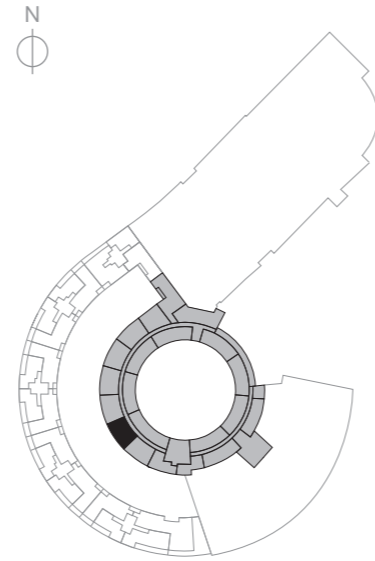
3 bedroom duplex

Net saleable area	sq m	sq ft
Total	204.60	2202
Ceiling height	m	
Max/Min	2.90/2.40	

Seventh floor

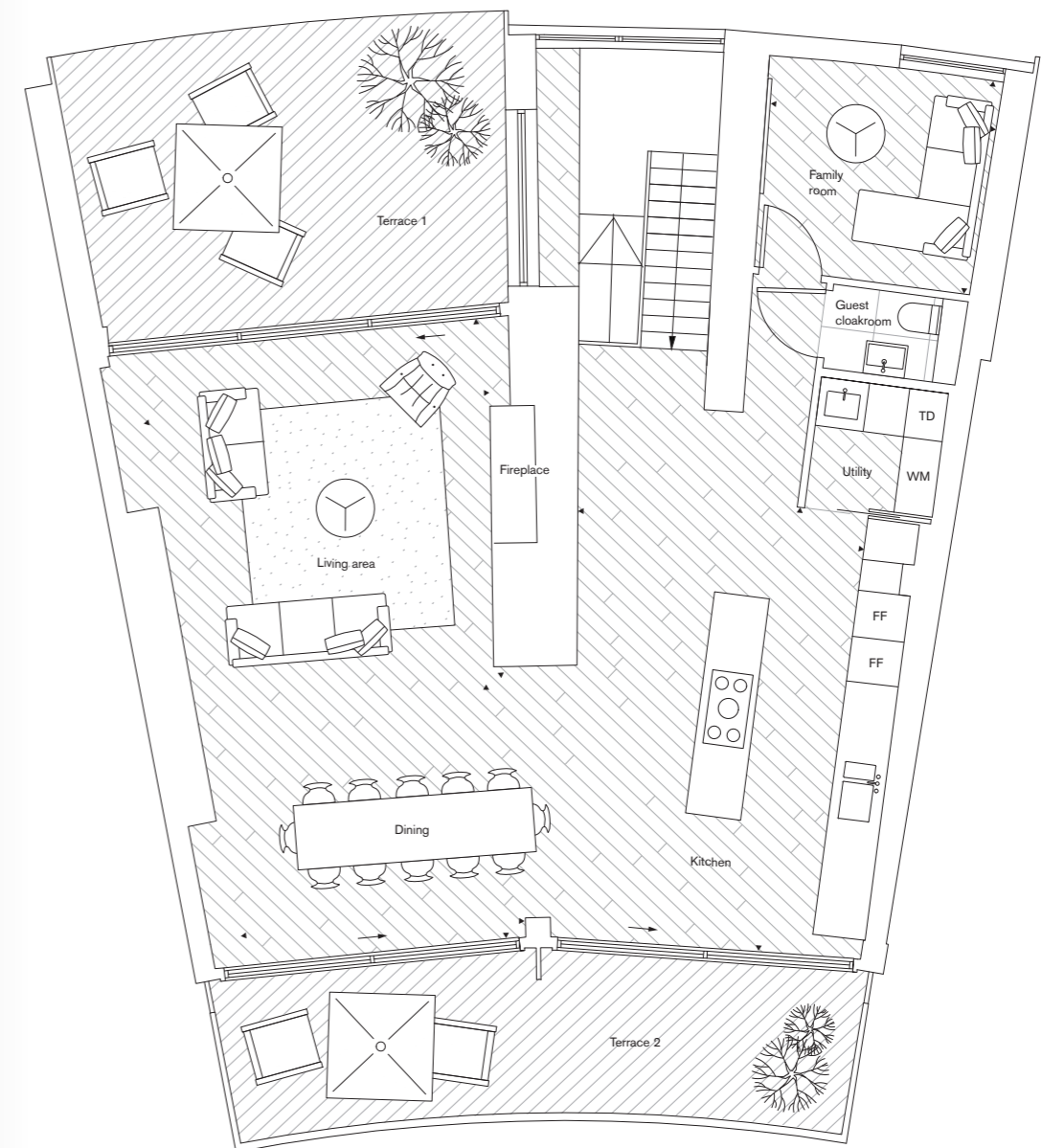
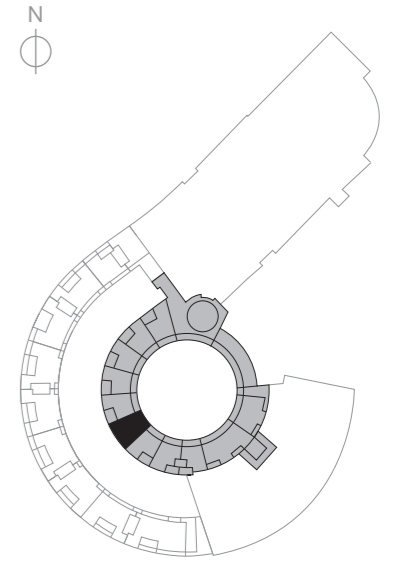
Net saleable area	sq m	sq ft
	94.70	1019
Room dimensions	m	
	ft	
Bedroom 1	3.10 × 3.80	10' 20" × 12' 6"
Bedroom 2	3.20 × 3.40	10' 6" × 11' 2"
Bedroom 3	3.60 × 2.80	11' 10" × 9' 2"

Please note: net saleable areas are measured as built whereas room and outdoor space dimensions are approximate and for guidance only.



Eighth floor

Net saleable area	sq m	sq ft
	109.90	1183
Room dimensions	m	
	ft	
Living area	4.90 × 5.20	16' 1" × 17' 1"
Family room	3.00 × 3.30	9' 10" × 10' 10"
Kitchen	6.10 × 4.10	20' 0" × 13' 5"
Dining	3.60 × 4.00	11' 10" × 13' 1"
Outdoor space	sq m	sq ft
Terrace 1	25.60	276
Terrace 2	21.20	228



8
7
6
5
4
3
2
1
G

8
7
6
5
4
3
2
1
G

Piercy&Company
Apartment C1.701

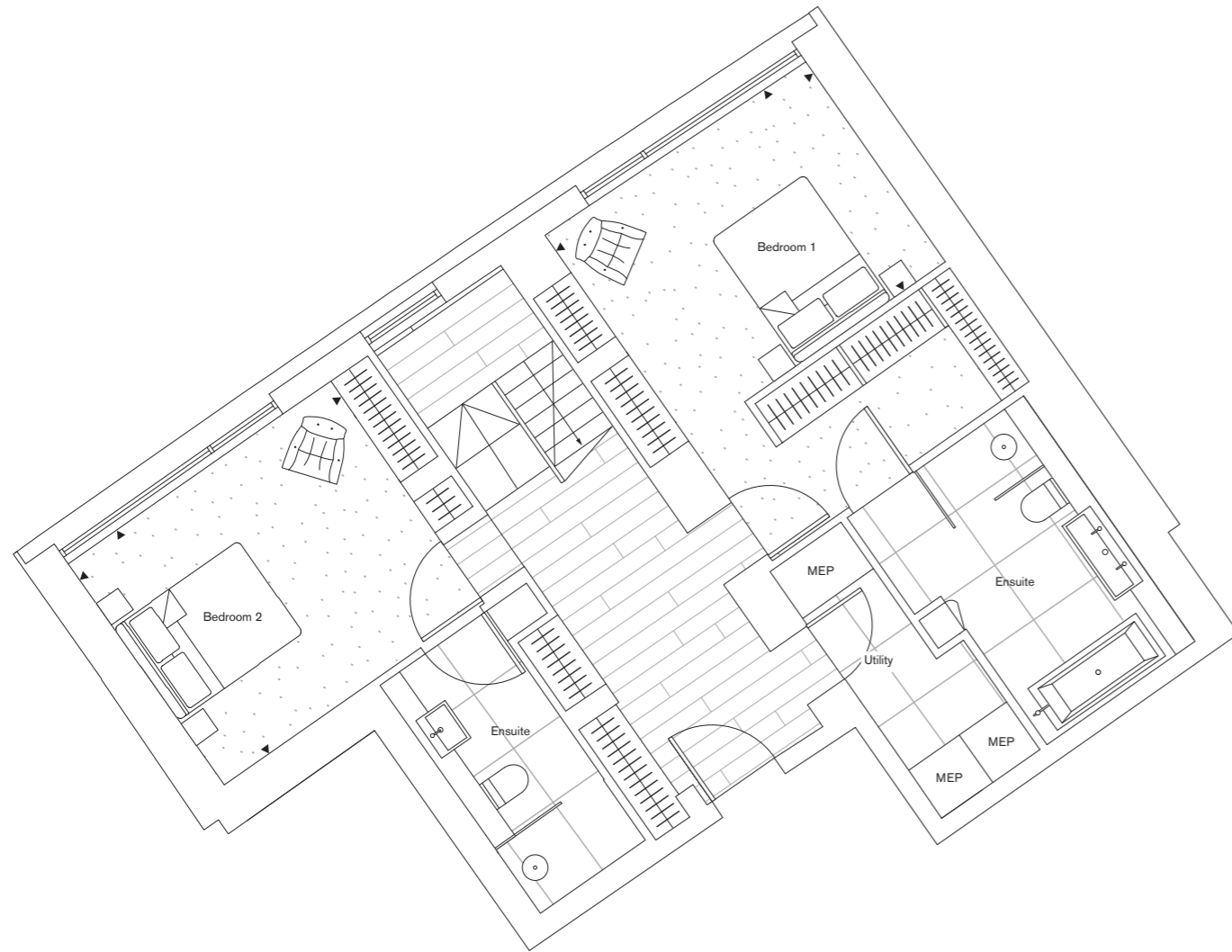
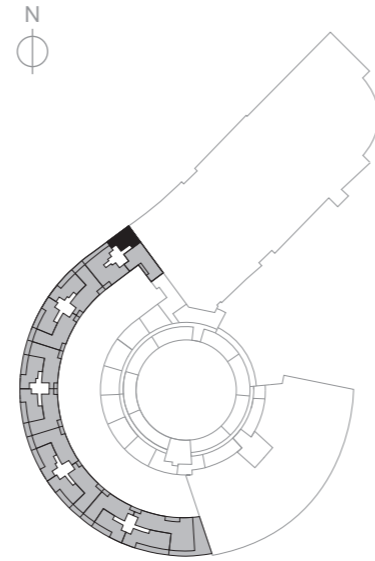
2 bedroom duplex

Net saleable area	sq m	sq ft
Total	227.30	2447
Ceiling height	m	
Max/Min	2.72/2.50	

Seventh floor

Net saleable area	sq m	sq ft
	85.10	916
Room dimensions	m	
	ft	
Bedroom 1	4.10 × 3.10	13'5" × 10'2"
Bedroom 2	4.20 × 3.50	13'9" × 11'6"

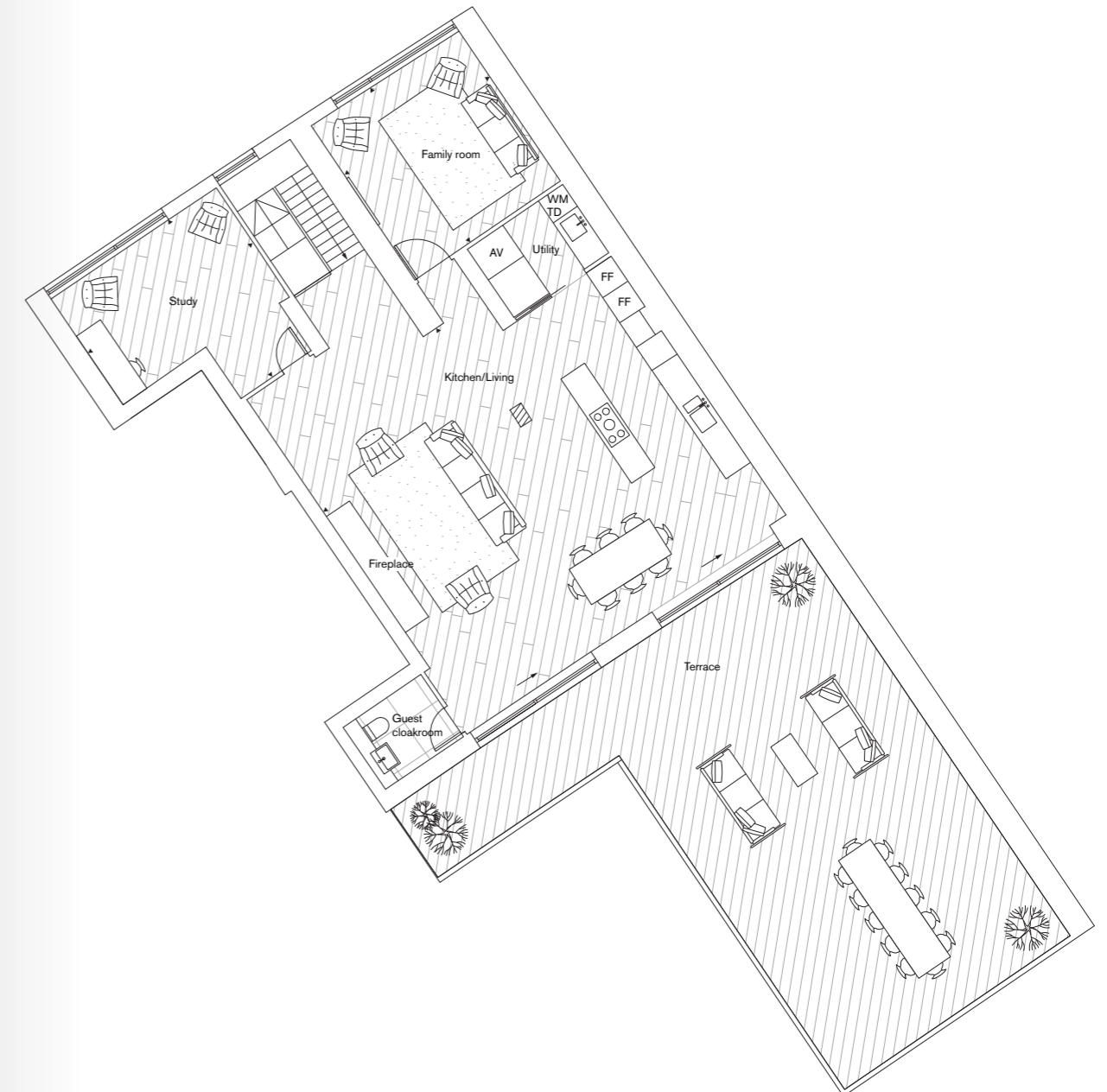
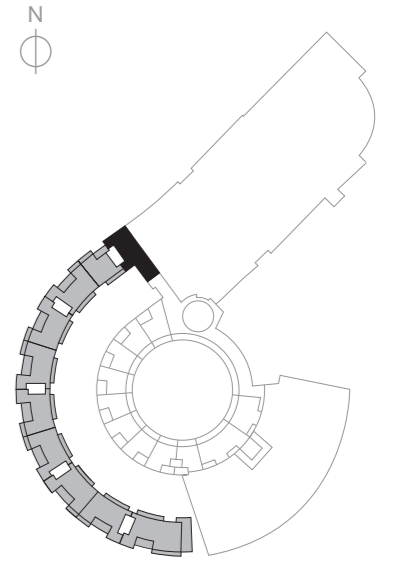
Please note: net saleable areas are measured as built whereas room and outdoor space dimensions are approximate and for guidance only.



8
7
 6
 5
 4
 3
 2
 1
 G

Eighth floor

Net saleable area	sq m	sq ft
	142.20	1531
Room dimensions	m	
	ft	
Kitchen/Living	8.50 × 8.50	27'11" × 27'11"
Family room	4.20 × 4.40	13'9" × 14'5"
Study	4.10 × 4.50	13'5" × 14'9"
Outdoor space	sq m	sq ft
Terrace	86.90	935



Column

8
 7
 6
 5
 4
 3
 2
 1
 G

Specification

Kitchen	<ul style="list-style-type: none"> - Molteni C and Dada Hi Line kitchen with matt lacquer finish doors - Marble worktop, under-mounted stainless steel sink with deck-mounted mixer tap 	<ul style="list-style-type: none"> - Fluted marble feature wall - Island unit with fluted timber feature panelling and marble worktop
Integrated appliances	<ul style="list-style-type: none"> - Miele full-height fridge - Miele full-height freezer - Miele combination microwave oven - Miele multifunction oven - Miele steam oven 	<ul style="list-style-type: none"> - Miele induction hob - Concealed recirculating extractor hood - 2x Miele dishwashers - 2x Miele wine coolers
Utility room	<ul style="list-style-type: none"> - Molteni C and Dada units with matt lacquer finish doors - Terrazzo worktop and glass splashback with under-mounted stainless steel sink and deck-mounted boiling water tap 	<ul style="list-style-type: none"> - Miele washing machine (Smeg washing machine in H.710 only) - Miele tumble dryer
Master bathrooms	<ul style="list-style-type: none"> - Fluted marble feature wall and marble shelf - Large-format porcelain tiles to other walls - Large-format porcelain tiled floor - Bespoke Corian vanity unit and basin with deck-mounted mixer tap - Wall-mounted white ceramic WC with concealed cistern 	<ul style="list-style-type: none"> - Matt black brassware throughout - Demisting mirror - Heated towel rail - Shower enclosure with glazed screen and ceiling-mounted shower head - White steel bath with Corian enclosure and handheld shower
Secondary bathrooms	<ul style="list-style-type: none"> - Fluted marble feature wall and marble shelf - Large-format porcelain tiles to other walls - Large-format porcelain tiled floor - Bespoke Corian vanity unit with basin and deck-mounted mixer tap - Wall-mounted white ceramic WC with concealed cistern 	<ul style="list-style-type: none"> - Matt black brassware throughout - Demisting mirror - Heated towel rail - Shower enclosure with glazed screen and ceiling-mounted shower head; or white steel bath with Corian enclosure, glazed shower screen, handheld shower and ceiling-mounted shower head
Guest cloakroom	<ul style="list-style-type: none"> - Porcelain tiled floor - Wall-mounted white WC with concealed cistern 	<ul style="list-style-type: none"> - Wall-mounted white basin with matt black brassware - Fitted mirror
Flooring	<ul style="list-style-type: none"> - High quality engineered timber to entrance hall, living space, kitchen, hallways and utility rooms 	<ul style="list-style-type: none"> - Carpet to bedrooms
Doors	<ul style="list-style-type: none"> - Full-height solid core timber entrance door and panel - Pocket sliding door to selected utility rooms 	<ul style="list-style-type: none"> - High quality ironmongery - Timber-lined internal doors and door frames to lower floor only with white painted doors to upper floor
Ceilings	<ul style="list-style-type: none"> - Plasterboard ceilings to all rooms 	

AV	Audiovisual
FF	Fridge Freezer
MEP	Mechanical, Electrical, Plumbing
TD	Tumble Dryer
WM	Washing Machine

Wardrobes	<ul style="list-style-type: none"> - Fitted walk-in wardrobes (where applicable) with timber-lined interiors, hanging rail, shelving and lighting (master bedrooms) 	<ul style="list-style-type: none"> - Fitted wardrobes (where applicable) with full-height lacquered doors, timber-lined interiors, hanging rail and shelving
Decoration	<ul style="list-style-type: none"> - Painted finish to internal walls and ceiling 	<ul style="list-style-type: none"> - Feature timber skirting to entrance hall
Internal stairs	<ul style="list-style-type: none"> - Cantilevered steel and timber staircase 	
Balconies/terraces	<ul style="list-style-type: none"> - Composite decking - Glazed or rail balustrades - Exterior power to selected terraces 	<ul style="list-style-type: none"> - External water supply to selected terraces - External lighting to selected terraces
Heating and cooling	<ul style="list-style-type: none"> - Central energy centre providing metered hot water, heating and cooling to all apartments - Comfort cooling provided to kitchen, living/dining area and bedrooms 	<ul style="list-style-type: none"> - Underfloor heating throughout - Filtered fresh air supplied throughout via heat recovery ventilation system - Feature gas fire to living area
Lighting	<ul style="list-style-type: none"> - Energy efficient LED downlighters throughout - 5 amp lighting in reception rooms and master bedrooms 	<ul style="list-style-type: none"> - Provision for future installation of pendant fittings to selected locations - LED feature lighting in kitchen and bathrooms
Power, AV, data and telephone systems	<ul style="list-style-type: none"> - Audiovisual door entry phone system linked to concierge desk - Television, telephone and data points to living/dining, bedrooms and study (where applicable) 	<ul style="list-style-type: none"> - Television Centre is served by a selection of internet, telephone and television providers - Purchasers are responsible for their own connections and related costs - Wiring provision for future installation of electric blinds in bedrooms
Lifts	<ul style="list-style-type: none"> - Passenger lifts serving all floors and basement car park 	
Security	<ul style="list-style-type: none"> - Management and 24-hour security services provided from on-site management office - CCTV surveillance throughout public areas 	<ul style="list-style-type: none"> - Video entry phone system to all apartments linked to front of house management team
Amenities	<ul style="list-style-type: none"> - 25,000 sq ft leisure facility incorporating heated indoor pool, gym, sauna and steam rooms - Residents' lounge 	<ul style="list-style-type: none"> - Residents' screening room - Residents' meeting room - Private landscaped gardens
Car parking and storage	<ul style="list-style-type: none"> - Car parking at extra cost and subject to availability - Secure cycle storage 	<ul style="list-style-type: none"> - Storage units available at extra cost and subject to availability

Sales & Marketing Suite

Sales Suite
5 Television Centre
101 Wood Lane
London W12 7FW

+44 (0)20 8811 8720

Joint Sales Agents



Savills
+44 (0)20 7409 8756
www.savills.co.uk
newhomes@savills.com



Strutt & Parker
+44 (0)20 7318 4677
www.struttandparker.com
newhomes@struttandparker.com

Important notice

All computer-generated images (CGIs) and photography images are indicative only.

Savills and Strutt & Parker for themselves and their clients and any joint agents give notice that:

1. They are not authorised to make or give any representations or warranties in relation to the property either here or elsewhere, either on their own behalf or on behalf of their client or otherwise. They assume no responsibility for any statement that may be made in these particulars. These particulars have been prepared in good faith and with all due care and are believed to be correct at the time of publication. However, they do not constitute any contract, part of a contract, offer representation or warranty and must not be relied upon as statements or representations of fact.

2. Any areas, dimensions, measurements or distances are approximate. The text, images, photographs and plans are for guidance only and are not necessarily comprehensive. It should not be assumed that the property has all the necessary planning, building regulation or other consents and neither Savills nor Strutt & Parker or their clients or joint agents have tested any services, equipment or facilities. Purchasers must satisfy themselves by inspection or otherwise.

3. These particulars were prepared from preliminary plans and specifications before the completion of the properties and are intended only as a guide for the marketing of Television Centre. Elements may change during construction and final finishes could vary. Prospective purchasers should not rely on this information and should ensure that their solicitor checks the plans and specification attached to their contract.

Design by dn&co.
dnco.com

June 2020

STANHOPE

 MITSUI FUDOSAN



televisioncentre.com

TELEVISION CENTRE